

PART SUPPLIED MOUNTED IN A DISPOSABLE PRESSURE SENSITIVE ADHESIVE FIXTURE FOR ATTACHMENT DURING BONDING

LENGTH DATA

CODE	8	16	24	32	40	48	56
LENGTH ± .05	.500	1.000	1.500	2.000	2.500	3.000	3.500

PIN DIA DATA

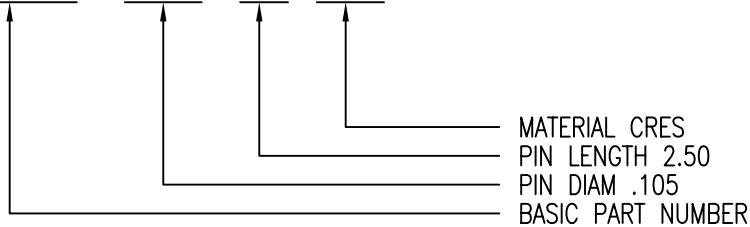
CODE	D DIAMETER
105	.105

MATERIAL DATA

CODE	MATERIAL
A	ALUMINUM
CR	CRES

EXAMPLE PART NUMBER

CS120 - 105 - 40 CR



UNLESS OTHERWISE SPECIFIED, ALL DIMENSIONS ARE IN INCHES AND TOLERANCES ARE AS SHOWN BELOW. DIMENSIONAL TOLERANCES AND SYMBOLS PER ANSI Y14.5M-1982.

PROPRIETARY PARTS SHOWN IN THIS DRAWING ARE THE SUBJECT OF ISSUED UNITED STATES AND FOREIGN PATENTS AND PATENTS PENDING. UNAUTHORIZED REPRODUCTION AND/OR DISTRIBUTION OF THIS DRAWING IS SPECIFICALLY PROHIBITED.

GLICK BOND

CARSON CITY
NEVADA 89706

TITLE

PIN, INSULATION MOUNT

ANGLES	±0.5°	APPROVALS	DATE
.XX	±.03	DRAWN CGH	4SEP92
.XXX	±.010	CHECKED JFS	4SEP92
.XXXX	±.001	RELEASED CGH	5SEP92

SIZE	CAGE CODE	DWG. NO.	REV.
A	66530	CS120	
SCALE	1/1		SHEET 1 OF 1