

THE INFORMATION AND DESIGN HEREIN WAS ORIGINATED BY AND IS THE PROPERTY OF SKYLOCK INDUSTRIES INCORPORATED. SKYLOCK INDUSTRIES INCORPORATED RESERVES ALL PATENT, PROPRIETARY, DESIGN MANUFACTURING, REPRODUCTION, USE AND SALES RIGHTS THERE TO, AND TO ANY ARTICLE DISCLOSED THEREIN EXCEPT TO THE EXTENT RIGHTS ARE EXPRESSLY GRANTED TO OTHERS. THE FOREGOING DOES NOT APPLY TO VENDOR PROPRIETARY PARTS.

REVISIONS				
ZONE	LTR	DESCRIPTION	DATE	APPROVED
	AC	REDRAWN	1/13/99	T. C.
	AD	SEE ECN AD	6/11/99	T. C.

NOTES: UNLESS OTHERWISE SPECIFIED.

- REMOVE ALL BURRS AND BREAK SHARP EDGES.
- MAT'L REF.: TURN; 2024-T4/T351 OR 7075-T6/T651 PER ASTM B-221, OR EQUIV. CAM; 303 CRES. PER AMS-5640N, OR EQUIV. STUD; 17-4 PH CRES, COND. A, PER AMS-5643, OR EQUIV & HEAT TREAT TO COND. H-900 PER MIL-H-6875.
- FINISH REF.: CRES; SATIN BRUSH & PASSIVATE PER AMS-QQ-P-35, OR EQUIV.

4 DECORATIVE FINISH REF.: BRIGHT POLISH, AND ANODIZE PER MIL-A-8625, TYPE II, CLASS 2, DYED CANDY APPLE RED OR EQUIV.

5 DECORATIVE FINISH REF.: SATIN BRUSH LENGTHWISE TO PART SURFACE AND CLEAR ANODIZE PER MIL-A-8625, TYPE II, CLASS I.

6 ROTATION: 360°; DETENTED EVERY 90°.

7 ROTATION: 180°; DETENTED EVERY 90°.

8 ROTATION: 90° RIGHT HAND.

9 ROTATION; 90° LEFT HAND.

- THE FOLLOWING STATIC LOAD IS FOR REFERENCE USE ONLY. IT IS PROVIDED FOR CUSTOMER ENGINEERING TO DETERMINE THE GENERAL SUITABILITY OF THE PRODUCT FOR ITS INTENDED USE. ALTHOUGH SKYLOCK IS PROVIDING THE REFERENCE STATIC LOAD, THE CUSTOMER IS ULTIMATELY RESPONSIBLE FOR CERTIFICATION OF THE PRODUCT FOR ITS SPECIFIC APPLICATION. REFERENCE STATIC LOAD: 1935 LBS. MAX. (-1 TO -9, -19 TO -27, -47, -49, -63 TO -67, -71, -73, -77, -85)
1200 LBS. MAX. (-11 TO -17, -29 TO -35)
900 LBS. MAX. (-37, -41)
4000 LBS. MAX. (-39, -43, -45, -51 TO -61, -69, -75, -79, -81, -83)

11 REMOVED.

12 REMOVED.

13 REMOVED.

- SHAFT NEEDS NO TORQUE ADJUSTMENT; TIGHTEN SHAFT AS MUCH AS POSSIBLE WHEN INSTALLING RETAINER.
- ALL RETAINERS HAVE THREADS COATED WITH VC-3 (VISCIDUS COATING VIBRATITE).
- APPLICABLE TO FAA-PMA REPLACEMENT OR MODIFICATION PARTS ONLY. PER FAR 45.15, PARTS WILL BE IDENTIFIED WITH:
 - FAA-PMA.
 - SKYLOCK IND. INC.
 - PART NO.
 - AIRCRAFT INSTALLATION ELIGIBILITY.

D DIM	C DIM	B DIM	A DIM	Ø DIM	PART NO.	DESCRIPTION	MATERIAL	SIZE	SPECIFICATION	MAKE FROM
.250	.100	2.74	1.24	2.12	-61	RETAINER	5	9		120222-61
.250	.100	2.74	1.24	2.12	-59	RETAINER	5	8		120222-59
.250	.100	2.74	1.24	2.12	-57	RETAINER	5	7		120222-57
.250	.100	3.50	1.24	2.88	-55	RETAINER	4	7		120222-55
.250	.100	5.12	.74 MAX.	4.50	-53	RETAINER	4	7		120222-53
.250	.100	2.365	.74 MAX.	1.74	-51	RETAINER	4	7		120222-51
.250	.100	5.12	2.00	4.50	-49	RETAINER	4	9		120222-49
.250	.100	5.12	2.00	4.50	-47	RETAINER	4	8		120222-47
.250	.100	2.74	2.00	2.12	-45	RETAINER	4	8		120222-45
.250	.100	2.74	2.00	2.12	-43	RETAINER	4	9		120222-43
.250	.100	9.42	1.24	8.80	-41	RETAINER	4	7		120222-41
.250	.100	2.74	1.24	2.12	-39	RETAINER	4	7		120222-39
.250	.100	8.12	1.24	7.50	-37	RETAINER	4	7		120222-37
.250	.100	6.62	1.24	6.00	-35	RETAINER	5	9		120222-35
.250	.100	6.62	1.24	6.00	-33	RETAINER	5	8		120222-33
.250	.100	6.62	1.24	6.00	-31	RETAINER	5	7		120222-31
.250	.100	6.62	1.24	6.00	-29	RETAINER	5	6		120222-29
.250	.100	5.12	.74 MAX.	4.50	-27	RETAINER	5	6		120222-27
.250	.100	5.12	1.24	4.50	-25	RETAINER	5	9		120222-25
.250	.100	5.12	1.24	4.50	-23	RETAINER	5	8		120222-23
.250	.100	5.12	1.24	4.50	-21	RETAINER	5	7		120222-21
.250	.100	5.12	1.24	4.50	-19	RETAINER	5	6		120222-19
.250	.100	6.62	1.24	6.00	-17	RETAINER	4	9		120222-17
.250	.100	6.62	1.24	6.00	-15	RETAINER	4	8		120222-15
.250	.100	6.62	1.24	6.00	-13	RETAINER	4	7		120222-13
.250	.100	6.62	1.24	6.00	-11	RETAINER	4	6		120222-11
.250	.100	5.12	.74 MAX.	4.50	-9	RETAINER	4	6		120222-9
.250	.100	5.12	1.24	4.50	-7	RETAINER	4	9		120222-7
.250	.100	5.12	1.24	4.50	-5	RETAINER	4	8		120222-5
.250	.100	5.12	1.24	4.50	-3	RETAINER	4	7		120222-3
.250	.100	5.12	1.24	4.50	-1	RETAINER	4	6		120222-1

PARTS LIST			
UNLESS OTHERWISE SPECIFIED	DRAWN BY	T. S.	2-17-88
DIMENSIONS ARE IN INCHES	CHECKED	DEAN VO	1/13/99
TOLERANCES ON	ENGINEER	T. CSIK	1/13/99
DECIMALS ANGLES DRILLED HOLES	MFG	P. MATSUOKA	1/22/99
.X ± .1 ± 0° 30' AND 10387	QC	J. VIVIRITO	2/2/99
.XX ± .03			
.XXX ± .010			
DO NOT SCALE THIS DRAWING			
MATERIAL - FINISH	USED ON	SIZE	CODE IDENT. NO. DRAWING NO. REV.
NEXT ASSY		C	51941 20222 AD
MANUFACTURE IN ACCORDANCE WITH SKYLOCK IND. INC., QUALITY CONTROL MANUAL QC.001		SCALE	NONE
		VT.	SHEET 1 OF 3

SKYLOCK INDUSTRIES INCORPORATED
MONROVIA CALIFORNIA U. S. A.

20222 RETAINER

THE INFORMATION AND DESIGN HEREIN WAS ORIGINATED BY AND IS THE PROPERTY OF SKYLOCK INDUSTRIES INCORPORATED. SKYLOCK INDUSTRIES INCORPORATED RESERVES ALL PATENT, PROPRIETARY, DESIGN MANUFACTURING, REPRODUCTION, USE AND SALES RIGHTS THERE TO, AND TO ANY ARTICLE DISCLOSED THEREIN EXCEPT TO THE EXTENT RIGHTS ARE EXPRESSLY GRANTED TO OTHERS. THE FOREGOING DOES NOT APPLY TO VENDOR PROPRIETARY PARTS.

REVISIONS				
ZONE	LTR	DESCRIPTION	DATE	APPROVED
		SEE SHT. 1 FOR NOTES		

D DIM	C DIM	B DIM	A DIM	C DIM	PART NO.	DESCRIPTION	MATERIAL	SIZE	SPECIFICATION	MAKE FROM
.250	.100	1.88	1.24	1.26	-87	RETAINER	4	7		120222 -87
.250	.100	5.12	1.62	4.50	-85	RETAINER	4	8		120222 -85
.250	.100	2.74	1.62	2.12	-83	RETAINER	4	7		120222 -83
.250	.100	2.74	1.24	2.12	-81	RETAINER	4	8		120222 -81
.250	.100	2.74	1.24	2.12	-79	RETAINER	4	9		120222 -79
.375	.100	5.12	1.24	4.50	-77	RETAINER	4	9		120222 -77
.375	.100	2.74	1.24	2.12	-75	RETAINER	4	7		120222 -75
.375	.100	5.12	1.24	4.50	-73	RETAINER	4	8		120222 -73
.250	.100	3.12	1.24	2.50	-71	RETAINER	4	8		120222 -71
.250	.100	2.74	.76 MAX.	2.12	-69	RETAINER	4	7		120222 -69
.250	.100	5.12	1.24	4.50	-67	RETAINER	4	7		120222 -67
.250	.100	3.12	1.24	2.50	-65	RETAINER	4	9		120222 -65
.250	.100	8.62	.74 MAX.	8.00	-63	RETAINER	4	7		120222 -63

PARTS LIST

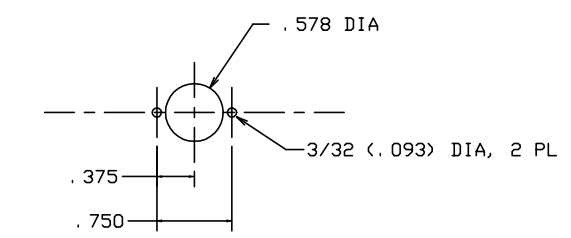
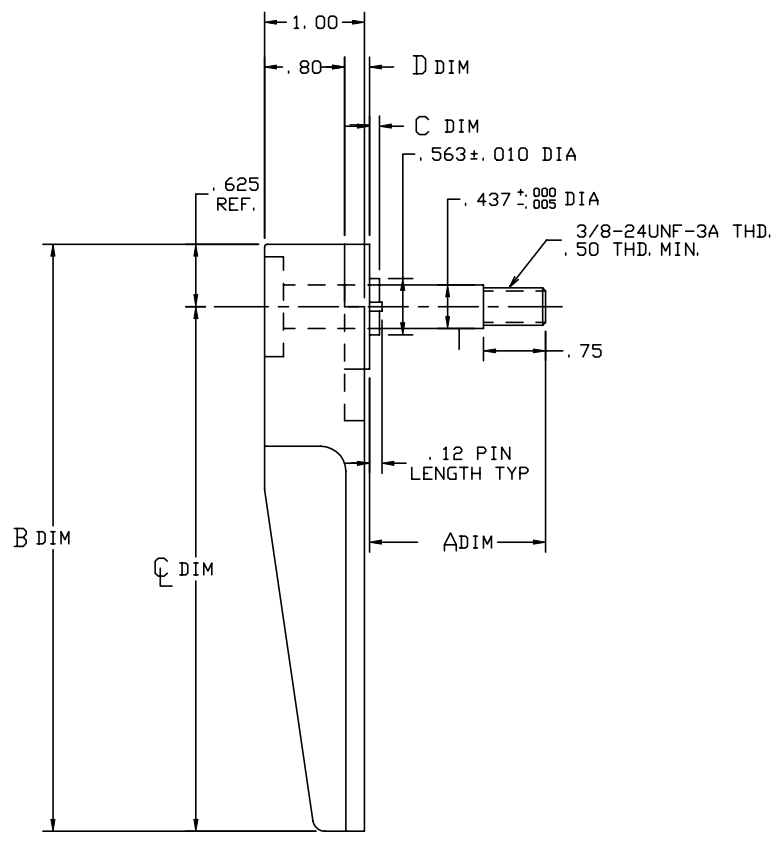
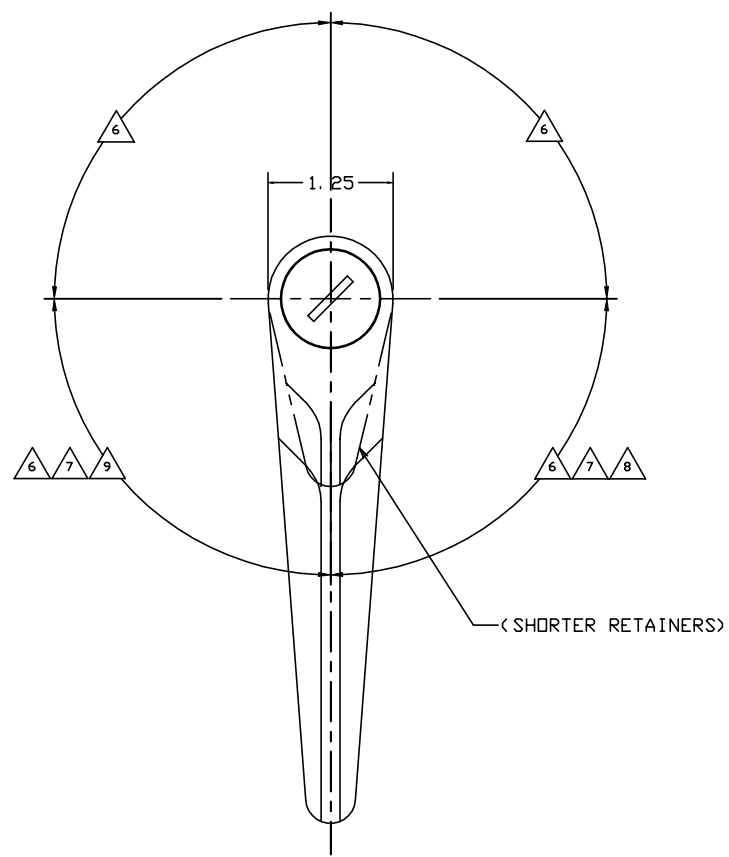
 SKYLOCK INDUSTRIES INCORPORATED
MONROVIA CALIFORNIA U. S. A.

20222 RETAINER

SIZE	CODE IDENT. NO.	DRAWING NO.	REV.
C	51941	20222	AD
SCALE	NONE	VT.	SHEET 2 OF 3

THE INFORMATION AND DESIGN HEREIN WAS ORIGINATED BY AND IS THE PROPERTY OF SKYLOCK INDUSTRIES INCORPORATED. SKYLOCK INDUSTRIES INCORPORATED RESERVES ALL PATENT, PROPRIETARY, DESIGN MANUFACTURING, REPRODUCTION, USE AND SALES RIGHTS THERE TO, AND TO ANY ARTICLE DISCLOSED THEREIN EXCEPT TO THE EXTENT RIGHTS ARE EXPRESSLY GRANTED TO OTHERS. THE FOREGOING DOES NOT APPLY TO VENDOR PROPRIETARY PARTS.

REVISIONS				
ZONE	LTR	DESCRIPTION	DATE	APPROVED
		SEE SHT. 1 FOR NOTES		



TYPICAL RETAINER

SUGGESTED PANEL CUTOUT

SKYLOCK INDUSTRIES INCORPORATED
MONROVIA CALIFORNIA U. S. A.

20222 RETAINER

SIZE	CODE IDENT. NO.	DRAWING NO.	REV.
C	51941	20222	AD
SCALE	NONE	VT.	SHEET 3 OF 3