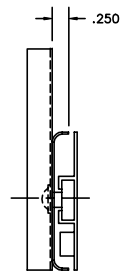
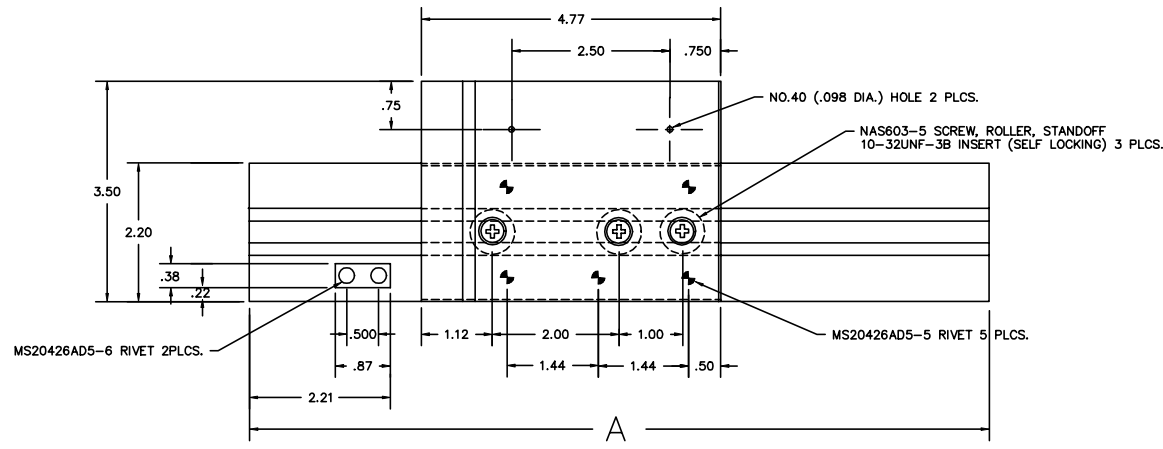
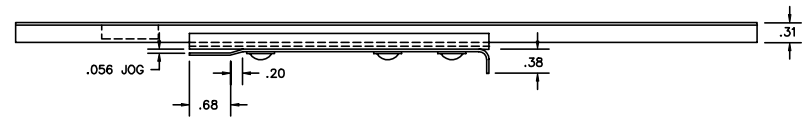


ALL INFORMATION AND DESIGN HEREIN ARE OWNED BY AND IS THE PROPERTY OF SKYLOCK INDUSTRIES INCORPORATED. WITHOUT WRITING PERMISSION, NO PART OF THIS DRAWING, INCLUDING DIMENSIONS, MANUFACTURING INFORMATION, AND ALL RIGHTS HEREIN, AND TO ANY OTHER DOCUMENTS, IS TO BE REPRODUCED OR TRANSMITTED IN ANY FORM OR BY ANY MEANS, ELECTRONIC OR MECHANICAL, INCLUDING PHOTOCOPYING, RECORDING, OR BY ANY INFORMATION STORAGE AND RETRIEVAL SYSTEM. PERMISSION IS GRANTED TO OTHERS TO MAKE UNLAWFUL COPIES OF THIS DRAWING FOR PERSONAL USE ONLY. ALL OTHER RIGHTS ARE RESERVED.

PATENT PENDING

- NOTES:
1. REMOVE ALL BURRS AND BREAK SHARP EDGES.
  2. MATL: RAILS, STOPS; 6061-T6 ALUM.  
TIE PLATE, CHANNEL; 2024-T3 ALUM.  
STANDOFF; SERIES 300 CRES  
ROLLER; NYLON
  3. FINISH: ALL ALUM.; CLEAR ANODIZE  
CRES; PASSIVATE

REVISIONS:				
ZONE	LR	DESCRIPTION	DATE	APPROVED
C		REDRAWN AND REVISED	1-3-91	JL



-401, -403, -405 SHOWN  
-402, -404, -406 OPP. (SEE SHT. 2)

36.00		-406	SLIDE RAIL ASSY	RT. H.
36.00		-405	SLIDE RAIL ASSY	LT. H.
24.00		-404	SLIDE RAIL ASSY	RT. H.
24.00		-403	SLIDE RAIL ASSY	LT. H.
12.00		-402	SLIDE RAIL ASSY	RT. H.
12.00		-401	SLIDE RAIL ASSY	LT. H.

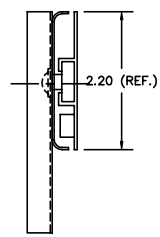
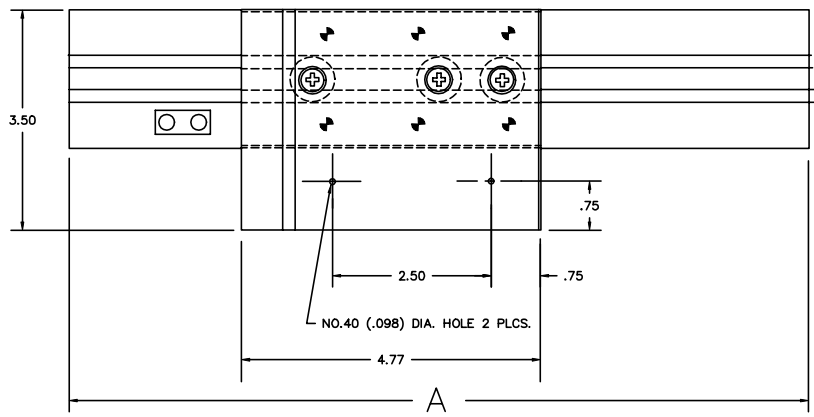
QTY REQD	PART / EDIT NO.	DESCRIPTION	MATERIAL / SPECIFICATION	REV																																					
<table border="1"> <tr> <td colspan="2">UNLESS OTHERWISE SPECIFIED: DIMENSIONS ARE IN INCHES</td> <td colspan="2">CONTRACT NO.</td> <td rowspan="2">  SKYLOCK INDUSTRIES INCORPORATED MONROVIA, CALIFORNIA, USA </td> </tr> <tr> <td>TOLERANCES</td> <td>ANGLES</td> <td>DRAWN BY</td> <td>DATE</td> </tr> <tr> <td>DECIMALS</td> <td>1/16"</td> <td>JL</td> <td>1-3-91</td> </tr> <tr> <td>1/32"</td> <td>1/8"</td> <td>CHECK</td> <td></td> </tr> <tr> <td>1/64"</td> <td>1/4"</td> <td>DESIGN</td> <td>SC 9-29-88</td> </tr> <tr> <td>DO NOT SCALE DRAWING</td> <td></td> <td>DESIGN ACTIVITY</td> <td></td> </tr> <tr> <td>NEXT ASST</td> <td>PRVL ASST</td> <td>USED ON</td> <td></td> </tr> <tr> <td></td> <td></td> <td>FORM</td> <td></td> </tr> <tr> <td>NOTED</td> <td>ACT BY</td> <td>DATE BY</td> <td>CUSTOMER</td> </tr> </table>					UNLESS OTHERWISE SPECIFIED: DIMENSIONS ARE IN INCHES		CONTRACT NO.		 SKYLOCK INDUSTRIES INCORPORATED MONROVIA, CALIFORNIA, USA	TOLERANCES	ANGLES	DRAWN BY	DATE	DECIMALS	1/16"	JL	1-3-91	1/32"	1/8"	CHECK		1/64"	1/4"	DESIGN	SC 9-29-88	DO NOT SCALE DRAWING		DESIGN ACTIVITY		NEXT ASST	PRVL ASST	USED ON				FORM		NOTED	ACT BY	DATE BY	CUSTOMER
UNLESS OTHERWISE SPECIFIED: DIMENSIONS ARE IN INCHES		CONTRACT NO.		 SKYLOCK INDUSTRIES INCORPORATED MONROVIA, CALIFORNIA, USA																																					
TOLERANCES	ANGLES	DRAWN BY	DATE																																						
DECIMALS	1/16"	JL	1-3-91																																						
1/32"	1/8"	CHECK																																							
1/64"	1/4"	DESIGN	SC 9-29-88																																						
DO NOT SCALE DRAWING		DESIGN ACTIVITY																																							
NEXT ASST	PRVL ASST	USED ON																																							
		FORM																																							
NOTED	ACT BY	DATE BY	CUSTOMER																																						
SCALE 1:1		RELEASE DATE	SHEET 1 OF 2	REV C																																					

ALL INFORMATION AND DESIGN HEREIN ARE OWNED BY AND IS THE PROPERTY OF SKYLOCK INDUSTRIES INCORPORATED. UNLESS OTHERWISE SPECIFICALLY INDICATED ALL PATENT, PROPRIETARY, DESIGN TRADEMARKS, APPROPRIATIONS, AND ALL OTHER RIGHTS HEREOF, AND TO ANY OTHER RIGHTS HEREOF, ARE RESERVED TO THE EXCLUSIVE BENEFIT AND CONVEYED TO SKYLOCK INDUSTRIES INCORPORATED. THIS DRAWING DOES NOT APPLY TO ANY OTHER APPROPRIATE PARTS.

PATENT PENDING

REVISIONS:				
ZONE	LR	DESCRIPTION	DATE	APPROVED
		SEE SHT. 1 FOR NOTES		

- NOTES:
1. REMOVE ALL BURRS AND BREAK SHARP EDGES.



-402, -404, -406 SHOWN

QTY REQD	PART / EBRT NO.	DESCRIPTION	MATERIAL / SPECIFICATION	REV
UNLESS OTHERWISE SPECIFIED: DIMENSIONS ARE IN INCHES		CONTRACT NO.	SKYLOCK INDUSTRIES INCORPORATED MONROVIA, CALIFORNIA, USA	
DECIMALS	TOLERANCES	ANGLES	DRAWN BY	DATE
3 OF 3	1 OF 30'	1 OF 30'	JL	1-3-91
3 OF 3 AND	DO NOT SCALE DRAWING	CHECK	DESIGN	DATE
NEXT ASST	FINAL ASST	SC	9-28-91	
USED ON	DESIGN ACTIVITY	CUSTOMER	REV	
NOTED	ACT BY	DATE BY	51941	20657
SCALE 1:1	RELEASE DATE	SHEET 2	OF 2	C

PART 2 OF 2