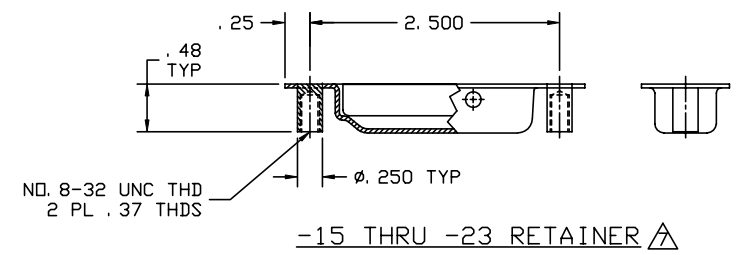
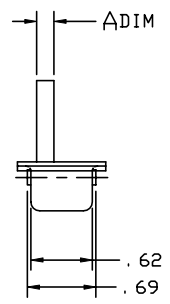
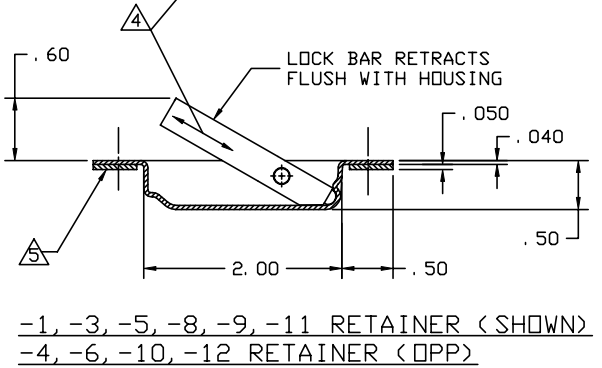
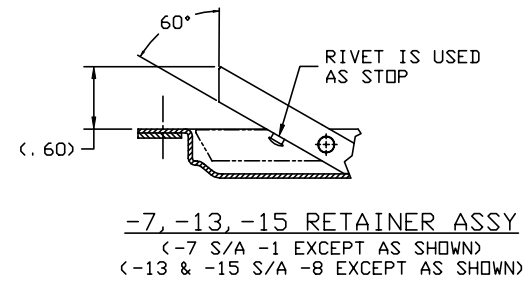
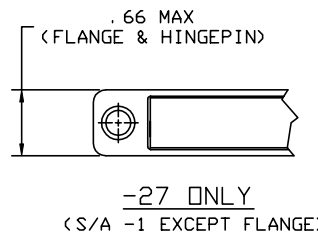
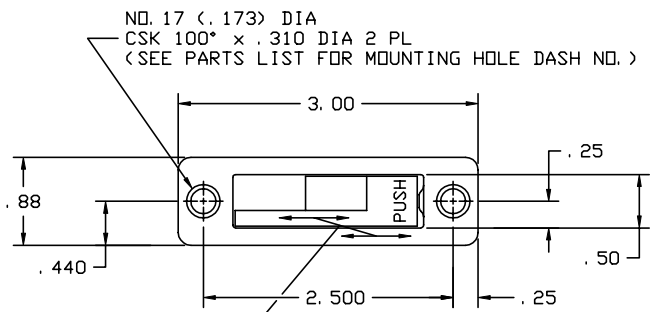


THE INFORMATION AND DESIGN HEREIN WAS ORIGINATED BY AND IS THE PROPERTY OF SKYLOCK INDUSTRIES INCORPORATED. SKYLOCK INDUSTRIES INCORPORATED RESERVES ALL PATENT, PROPRIETARY, DESIGN MANUFACTURING, REPRODUCTION, USE AND SALES RIGHTS THERE TO, AND TO ANY ARTICLE DISCLOSED THEREIN EXCEPT TO THE EXTENT RIGHTS ARE EXPRESSLY GRANTED TO OTHERS. THE FOREGOING DOES NOT APPLY TO VENDOR PROPRIETARY PARTS.

REVISIONS				
ZONE	LTR	DESCRIPTION	DATE	APPROVED
	G	SEE ECN G		



A FOR RETAINERS WITH ALUM. LOCKBAR, ADD 'A' TO END OF MAKE FROM PART NUMBER, EXAMPLE: 120098-1A.

10. LOCKBAR IS DETENTED AT THE OPEN & CLOSED POSITIONS.
9. APPLICABLE TO FAA-PMA REPLACEMENT OR MODIFICATION PARTS ONLY. PER FAR 45.15, PARTS WILL BE IDENTIFIED WITH:
1. FAA-PMA.
 2. SKYLOCK IND. INC.
 3. PART NO.
 4. AIRCRAFT INSTALLATION ELIGIBILITY.

B BRIGHT POLISH, AND ANODIZE PER MIL-A-8625, TYPE II, CLASS 2, OR EQUIV, DYED CANDY APPLE RED, LOCK BAR ONLY. LOCKBAR IS 2024-T4 ALUM. ALLOY PER ASTM B-221 OR EQUIV.

A -15 THRU -23 RETAINERS HAVE THREADED STUDS -15, -17, -19, -21, -23 ARE LIKE -8, -9, -10, -11, -12 RESPECTIVELY.

A INDICATES RIGHT OR LEFT HAND ASSEMBLY.

S PLATE-SHIM IS OPTIONAL, IF REQUIRED ADD LETTER 'P' TO PART NO. EXAMPLE 20098-1-P.

A DECORATIVE FINISH REF.: SATIN BRUSH DIRECTION INDICATED.

3. FINISH REF.: CRES PARTS: PASSIVATE PER AMS-QQ-P-35, OR EQUIV. ALUM PARTS; ANODIZE PER MIL-A-8625, OR EQUIV.

2. MAT'L REF.: TO ORDER RETAINER WITH LOCKBAR MADE OF ALUM. ALLOY, ADD '-A' TO PART NUMBER. EXAMPLE: 20098-1-A. LOCKBAR: 2024-T4 PER ASTM B-221 OR EQUIV. ALSO SEE **A**.

1. MAT'L REF.: ALL PARTS 300 SERIES CRES PER ASTM A-240 OR EQUIV. (ALL BASIC DASH NO.'S EXCEPT -25).

REMOVE ALL BURRS AND SHARP CORNERS.
NOTES: UNLESS OTHERWISE SPECIFIED

QTY	WITH MOUNTING HOLE	WITHOUT MOUNTING HOLE	PART NO.	DESCRIPTION	MATERIAL	SIZE	SPECIFICATION	MAKE FROM	
			-27	RETAINER		.500	120098-227		
			A -25	RETAINER		.500	120098-225		
			A -23	RETAINER	R. H.	.156	120098-223		
			A -21	RETAINER	L. H.	.156	120098-221		
			A -19	RETAINER	R. H.	.250	120098-219		
			A -17	RETAINER	L. H.	.250	120098-217		
			A -15	RETAINER		.500	120098-215		
			-7	-13	RETAINER	.500	120098-207	120098-213	
			-6	-12	RETAINER	R. H.	.156	120098-206	120098-212
			-5	-11	RETAINER	L. H.	.156	120098-205	120098-211
			-4	-10	RETAINER	R. H.	.250	120098-204	120098-210
			-3	-9	RETAINER	L. H.	.250	120098-203	120098-209
			-1	-8	RETAINER	.500	120098-201	120098-208	

A ADIM WITH MOUNTING HOLE WITHOUT MOUNTING HOLE

PARTS LIST

UNLESS OTHERWISE SPECIFIED	DRAWN BY	M. FORTES
DIMENSIONS ARE IN INCHES	CHECKED	T. CSIK 9/7/99
TOLERANCES ON	ENGINEER	T. CSIK 9/7/99
DECIMALS ANGLES DRILLED HOLES	MFG	P. MATSUOKA 9/16/99
.X ± .1 ± 0° 30' AND 10387	QC	J. VIVIRITO 9/16/99
.XXX ± .010		

DO NOT SCALE THIS DRAWING

MATERIAL - FINISH USED ON 20098

MANUFACTURE IN ACCORDANCE WITH SKYLOCK IND. INC., QUALITY CONTROL MANUAL QC 001

SCALE 1:1

MANROVIA CALIFORNIA U. S. A.

20098 RETAINER

SIZE C CODE IDENT. NO. 51941 DRAWING NO. 20098 REV. G

SHEET 1 OF 1