

THE INFORMATION AND DESIGN HEREIN WAS ORIGINATED BY AND IS THE PROPERTY OF SKYLOCK INDUSTRIES INCORPORATED. SKYLOCK INDUSTRIES INCORPORATED RESERVES ALL PATENT, PROPRIETARY, DESIGN, MANUFACTURING, REPRODUCTION, USE AND SALES RIGHTS THEREIN, AND TO ANY ARTICLE DISCLOSED THEREIN EXCEPT TO THE EXTENT RIGHTS ARE EXPRESSLY GRANTED TO OTHERS. THE FOREGOING DOES NOT APPLY TO VENDOR PROPRIETARY ITEMS.


NOTES: UNLESS OTHERWISE SPECIFIED.

1. REMOVE ALL BURRS AND BREAK SHARP CORNERS.
2. MAT'L: RETAINER; 7075-T6 ALUM. ALLY PER QQ-A-225/9 OR QQ-A-200/11, CAM; 17-4PH CRES COND. A PER AMS-5643, HEAT TREAT TO COND. H900 PER MIL-H-6875.
- 3 FINISH: CAM; PASSIVATE PER QQ-P-35, AND DRY FILM LUBRICATE PER MIL-L-46010 OR EQUIV.
- 4 STATIC LOAD: 1445 LBS. @ 1.00' (< 30° DEFLECTION).  
850 LBS. @ 1.75' (< 48° DEFLECTION).  
(MOUNTED TO STEEL TEST FIXTURE, HELD FOR 3 SECONDS)
5. APPLY APPROPRIATE LOCKING TORQUE WHEN INSTALLING NAS623 SCREW.
6. SEE DRAWING 121001 FOR PARTS LIST AND ASSEMBLY DETAILS.  
(FOR SKYLOCK USE ONLY--CONTAINS CONFIDENTIAL INFORMATION)
- 7 FINISH: RETAINER; SATIN BRUSH, AND CLEAR ANODIZE PER MIL-A-8625, TYPE II, CLASS 1.
- 8 FINISH: RETAINER; BRIGHT POLISH, AND CANDY APPLE RED ANODIZE PER MIL-A-8625, TYPE II, CLASS 2.
- 9 ROTATION: 90° LEFT HAND, DETENTED AT EACH 90°.
- 10 ROTATION: 90° RIGHT HAND, DETENTED AT EACH 90°.

REVISIONS				
ZONE	LTR	DESCRIPTION	DATE	APPROVED
	NC	PRODUCTION RELEASE	4-19-00	T. CSIK

U. S. PAT. NO. 6, 010, 094, D422482,  
AND INTERNATIONAL PATENTS APPLY.

3.00	-68	RETAINER	10	8	121001-68	3.00	-18	RETAINER	10	7	121001-18
3.00	-67	RETAINER	9	8	121001-67	3.00	-17	RETAINER	9	7	121001-17
2.75	-66	RETAINER	10	8	121001-66	2.75	-16	RETAINER	10	7	121001-16
2.75	-65	RETAINER	9	8	121001-65	2.75	-15	RETAINER	9	7	121001-15
2.50	-64	RETAINER	10	8	121001-64	2.50	-14	RETAINER	10	7	121001-14
2.50	-63	RETAINER	9	8	121001-63	2.50	-13	RETAINER	9	7	121001-13
2.25	-62	RETAINER	10	8	121001-62	2.25	-12	RETAINER	10	7	121001-12
2.25	-61	RETAINER	9	8	121001-61	2.25	-11	RETAINER	9	7	121001-11
2.00	-60	RETAINER	10	8	121001-60	2.00	-10	RETAINER	10	7	121001-10
2.00	-59	RETAINER	9	8	121001-59	2.00	-9	RETAINER	9	7	121001-9
1.75	-58	RETAINER	10	8	121001-58	1.75	-8	RETAINER	10	7	121001-8
1.75	-57	RETAINER	9	8	121001-57	1.75	-7	RETAINER	9	7	121001-7
1.50	-56	RETAINER	10	8	121001-56	1.50	-6	RETAINER	10	7	121001-6
1.50	-55	RETAINER	9	8	121001-55	1.50	-5	RETAINER	9	7	121001-5
1.25	-54	RETAINER	10	8	121001-54	1.25	-4	RETAINER	10	7	121001-4
1.25	-53	RETAINER	9	8	121001-53	1.25	-3	RETAINER	9	7	121001-3
1.00	-52	RETAINER	10	8	121001-52	1.00	-2	RETAINER	10	7	121001-2
1.00	-51	RETAINER	9	8	121001-51	1.00	-1	RETAINER	9	7	121001-1
Δ DIM	PART NO.	DESCRIPTION	ROTATION	FINISH	MAKE FROM	Δ DIM	PART NO.	DESCRIPTION	ROTATION	FINISH	MAKE FROM

UNLESS OTHERWISE SPECIFIED DIMENSIONS ARE IN INCHES TOLERANCES ON DECIMALS ANGLES DRILLED HOLES .X ± .1 ± 0° 30' AND 10387 .XX ± .03 .XXX ± .010  DO NOT SCALE THIS DRAWING	DRAWN BY T. CSIK 5-87-98 CHECKED ENGR. MFG. D.C.	5-87-98	 SKYLOCK INDUSTRIES INCORPORATED MONROVIA CALIFORNIA U. S. A.		
RETAINER					
MANUFACTURE IN ACCORDANCE WITH SKYLOCK QUALITY CONTROL MANUAL 001.		SIZE C	CODE IDENT. NO. 51941	DRAWING NO. 21001	REV. NC
		SCALE NONE	VT.	SHEET 1 OF 2	

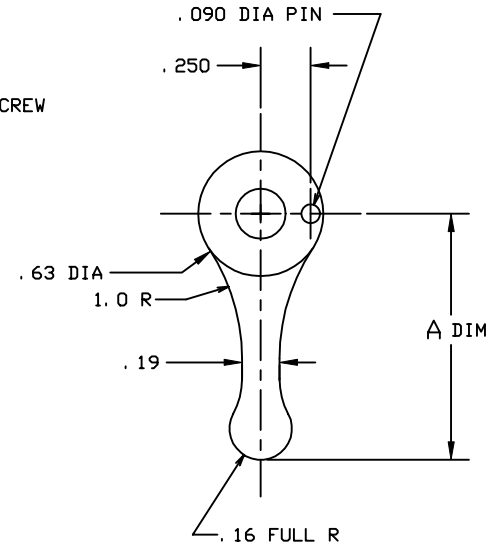
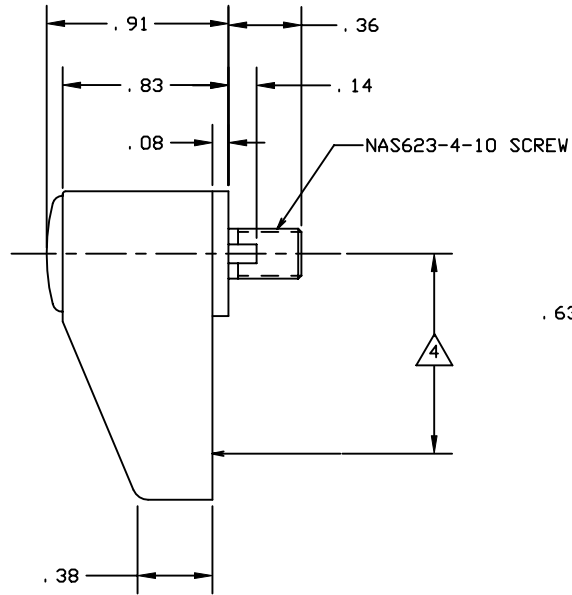
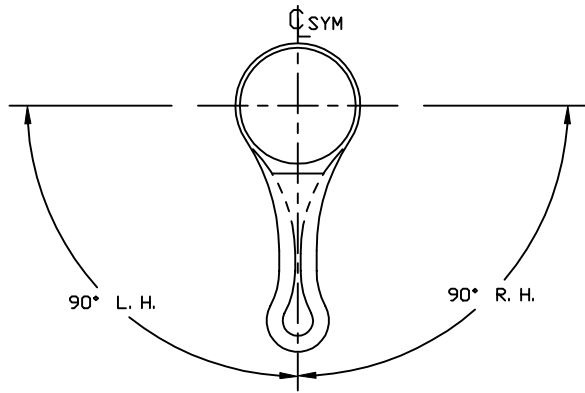
4

3

2

1

REVISIONS				
ZONE	LTR	DESCRIPTION	DATE	APPROVED
		SEE SHT. 1 FOR NOTES		



TYPICAL RETAINER

U. S. PAT. NO. 6, 010, 094, D422482,  
AND INTERNATIONAL PATENTS APPLY.

SKYLOCK INDUSTRIES INCORPORATED  
MONROVIA CALIFORNIA U. S. A.

RETAINER

SIZE	CODE IDENT. NO.	DRAWING NO.	REV.
C	51941	21001	NC
SCALE	NONE	VT.	SHEET 2 OF 2

4

3

2

1