



THE INFORMATION AND DESIGN HEREIN WAS ORIGINATED BY AND IS THE PROPERTY OF SKYLOCK INDUSTRIES INCORPORATED. SKYLOCK INDUSTRIES INCORPORATED RESERVES ALL PATENT, PROPRIETARY, DESIGN MANUFACTURING, REPRODUCTION, USE AND SALES RIGHTS THERE TO, AND TO ANY ARTICLE DISCLOSED THEREIN EXCEPT TO THE EXTENT RIGHTS ARE EXPRESSLY GRANTED TO OTHERS. THE FOREGOING DOES NOT APPLY TO VENDOR PROPRIETARY PARTS.

REVISIONS				
ZONE	LTR	DESCRIPTION	DATE	APPROVED
	NC	PRODUCTION RELEASE	10-14-91	T. CSIK
	A	ADDED -403, -404	2-6-92	T. CSIK
	B	REVISED NOTE 5, WAS 1300 LBS. MAX.	7-10-97	T. CSIK
	C	SEE ECN C		

NOTES: UNLESS OTHERWISE SPECIFIED.

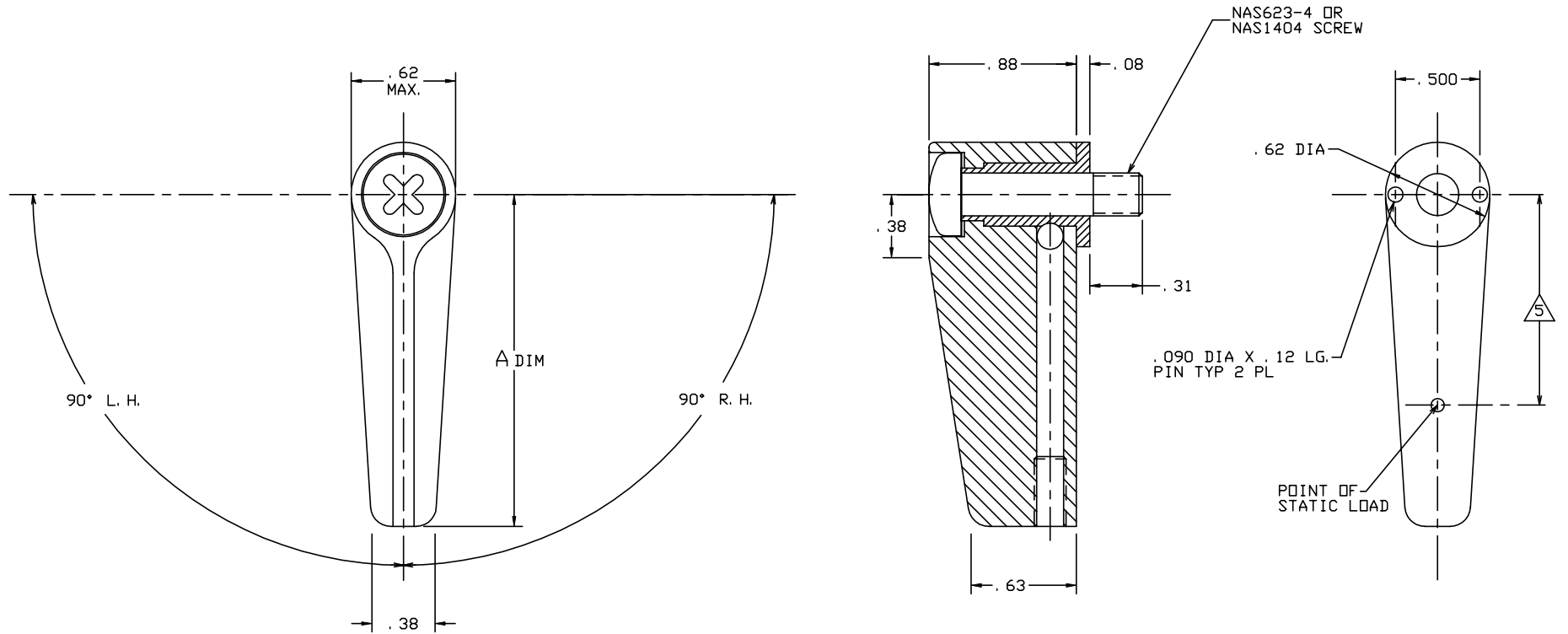
1. REMOVE ALL BURRS AND BREAK SHARP EDGES.
2. MAT'L REF: RETAINER; 7075-T6/T651 PER ASTM B-221, OR EQUIV. ALL OTHER PARTS; 300 SERIES CRES.
3. FINISH REF: PASSIVATE PER AMS-QQ-P-35.
4. DECORATIVE FINISH REF: RETAINER; BRIGHT POLISH, AND ANODIZE PER MIL-A-8625, TYPE II, CLASS 2, DYED CANDY APPLE RED.
5.  THE FOLLOWING STATIC LOAD IS FOR REFERENCE USE ONLY. IT IS PROVIDED FOR CUSTOMER ENGINEERING TO DETERMINE THE GENERAL SUITABILITY OF THE PRODUCT FOR ITS INTENDED USE. ALTHOUGH SKYLOCK IS PROVIDING THE REFERENCE STATIC LOAD, THE CUSTOMER IS ULTIMATELY RESPONSIBLE FOR CERTIFICATION OF THE PRODUCT FOR ITS SPECIFIC APPLICATION. REFERENCE STATIC LOAD: 1530 LBS. MAX. @ .75.
6. APPLICABLE TO FAA-PMA REPLACEMENT OR MODIFICATION PARTS ONLY. PER FAR 45.15, PARTS WILL BE IDENTIFIED WITH:
  1. FAA-PMA.
  2. SKYLOCK IND. INC.
  3. PART NO.
  4. AIRCRAFT INSTALLATION ELIGIBILITY.

2. 50	-404	RETAINER ASSY	< 90° RIGHT HAND	120739-404
2. 50	-403	RETAINER ASSY	< 90° LEFT HAND	120739-403
1. 97	-402	RETAINER ASSY	< 90° RIGHT HAND	120739-402
1. 97	-401	RETAINER ASSY	< 90° LEFT HAND	120739-401


A DIM	PART NO.	DESCRIPTION	MATERIAL	SIZE	SPECIFICATION	MAKE FROM
PARTS LIST						
UNLESS OTHERWISE SPECIFIED		DRAWN BY	T. CSIK	10-14-91	 SKYLOCK INDUSTRIES INCORPORATED MONROVIA CALIFORNIA U. S. A.	
DIMENSIONS ARE IN INCHES		CHECKED	T. CSIK	7/27/99		
TOLERANCES ON		ENGINEER	T. CSIK	7/27/99		
DECIMALS ANGLES DRILLED HOLES		QC	J. VIVIRITO	8/3/99		
.X ± .1		WFG		P. MATSUOKA	8/3/99	20739 RETAINER
.XX ± .03						
.XXX ± .010						
DO NOT SCALE THIS DRAWING						
MATERIAL - FINISH		USED ON		SIZE	CODE IDENT. NO.	DRAWING NO.
NEXT ASSY				C	51941	20739
MANUFACTURE IN ACCORDANCE WITH SKYLOCK IND. INC., QUALITY CONTROL MANUAL QC.001				SCALE	2: 1	VT.
				SHEET		1 OF 2

THE INFORMATION AND DESIGN HEREIN WAS ORIGINATED BY AND IS THE PROPERTY OF SKYLOCK INDUSTRIES INCORPORATED. SKYLOCK INDUSTRIES INCORPORATED RESERVES ALL PATENT, PROPRIETARY, DESIGN MANUFACTURING, REPRODUCTION, USE AND SALES RIGHTS THERE TO, AND TO ANY ARTICLE DISCLOSED THEREIN EXCEPT TO THE EXTENT RIGHTS ARE EXPRESSLY GRANTED TO OTHERS. THE FOREGOING DOES NOT APPLY TO VENDOR PROPRIETARY PARTS.

REVISIONS				
ZONE	LTR	DESCRIPTION	DATE	APPROVED
		SEE SHT. 1 FOR NOTES		



TYPICAL RETAINER


**SKYLOCK INDUSTRIES INCORPORATED**  
 MONROVIA CALIFORNIA U. S. A.

**20739 RETAINER**

SIZE	CODE IDENT. NO.	DRAWING NO.	REV.
C	51941	20739	C
SCALE	2: 1	VT.	SHEET 2 OF 2