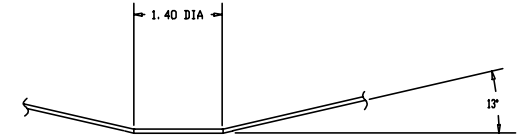


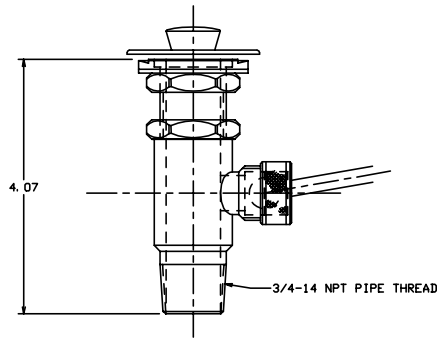
THE INFORMATION AND DESIGN HEREIN WAS ORIGINATED BY AND IS THE PROPERTY OF SKYLOX INDUSTRIES INCORPORATED. SKYLOX INDUSTRIES INCORPORATED RESERVES ALL PATENT, PROPRIETARY, DESIGN MANUFACTURING, REPRODUCTION, USE AND SALES RIGHTS HEREIN, AND TO ANY PATENTS DISCLOSED HEREIN EXCEPT TO THE EXTENT RIGHTS ARE EXPRESSLY GRANTED TO OTHERS. THE FOREGOING DOES NOT APPLY TO NON-PATENT PROPRIETARY PARTS.

| REVISIONS | | | | |
|-----------|----|--------------------|---------|----------|
| ZONE | LR | DESCRIPTION | DATE | APPROVED |
| NC | | PRODUCTION RELEASE | 7-20-93 | TC |

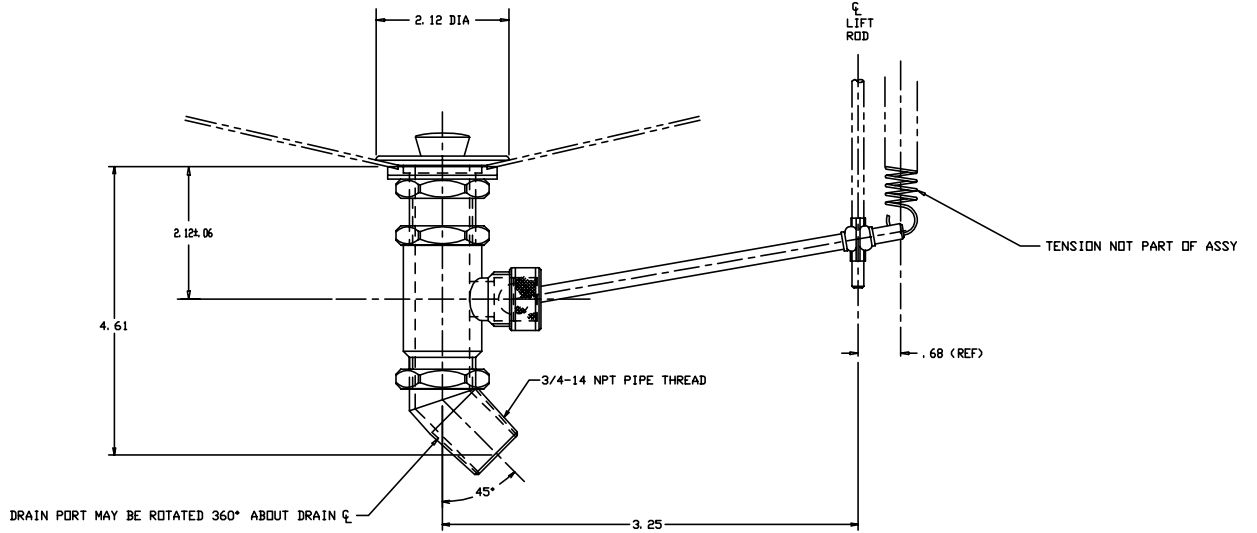
- NOTES: UNLESS OTHERWISE SPECIFIED
1. REMOVE ALL BURRS AND SHARP EDGES
 2. MAT'L: SINK FLANGE, BODY, DRAIN TUBE, ACTUATING ROD, AND POPPET; CRES; SEALS AND GASKETS; RUBBER; ACTUATING BALL AND HOUSING; NYLON
 3. FINISH ALL VISIBLE SURFACES SHALL BE SATIN BRUSHED



SINK-DRAIN CUTOUT



-403 DRAIN ASSY
(SAME AS -401 EXCEPT AS SHOWN)



-401 DRAIN ASSY (SHOWN)

DRAIN PORT MAY BE ROTATED 360° ABOUT DRAIN C

| | | | | | |
|------------|-----------------|---|--------------------------|----------------------|---------|
| -403 | | DRAIN ASSY | | | |
| -401 | | DRAIN ASSY | | | |
| QTY REQ'D | PART / INCH NO. | DESCRIPTION | MATERIAL / SPECIFICATION | | |
| | | UNLESS OTHERWISE SPECIFIED TOLERANCES ARE IN INCHES | | CONTRACT NO. | |
| TOLERANCES | | ANGULAR | | DATE | |
| DECIMALS | FRAC | IN | FRAC | DATE | 7-19-93 |
| .001 | 1/1000 | 0 | 0 | DRAWN BY T. CSIK | |
| NEXT ASSY | | FINISH ASSY | | CHECK | |
| | | | | | |
| USED ON | | DESIGN ACTIVITY | | SCALE 1/1 | |
| FINISH | | ACT WT | | CALC WT | |
| | | CUSTOMER | | RELEASE DATE 7-20-93 | |
| | | | | SHEET 1 OF 1 | |

SKYLOX INDUSTRIES INCORPORATED
MENDOCINO, CALIFORNIA, USA

DRAIN ASSY

SHEET 1 OF 1
SCALE 1/1
RELEASE DATE 7-20-93
SHEET 1 OF 1