

THE INFORMATION AND DESIGN HEREIN WAS ORIGINATED BY AND IS THE PROPERTY OF SKYLARK INDUSTRIES INCORPORATED. SKYLARK INDUSTRIES INCORPORATED RESERVES ALL PATENT, PROPRIETARY, DESIGN MANUFACTURING INFORMATION, USE AND SALES RIGHTS HEREIN, AND TO ANY PATENTS DEVELOPED THEREIN EXCEPT TO THE EXTENT RIGHTS ARE EXPRESSLY GRANTED TO OTHERS. THE FOREGOING DOES NOT APPLY TO NON-PATENTABLE RIGHTS.

REVISIONS				
ZONE	LTR	DESCRIPTION	DATE	APPROVED
	K	REDRAWN AND REVISED	5/3/91	SC
	L	SEE ECN L	1/3/99	T. CSIK
	M	SEE ECN M		

NOTES: UNLESS OTHERWISE SPECIFIED

- REMOVE ALL BURRS AND SHARP EDGES.
- MAT'L: TURN; 2024-T4/OR 7075-T6 PER ASTM B-221, OR EQUIV.
BASE & SHAFT; 17-4 PH CRES, COND A PER AMS-5643 OR EQUIV.
- MAT'L: TURN; 303 CRES, PER AMS-5640N OR EQUIV.
- DECORATIVE FINISH: BRIGHT POLISH LENGTHWISE TO PART SURFACE &- ANODIZE PER MIL-A-8625, TYPE II, CLASS 2, DYED CANDY APPLE RED, OR EQUIV.
- DECORATIVE FINISH: SATIN BRUSH LENGTHWISE TO PART SURFACE &- CLEAR ANODIZE PER MIL-A-8625, TYPE II, CLASS 1, OR EQUIV.
- DECORATIVE FINISH: BRIGHT POLISH, PASSIVATE PER AMS-QQ-P-35, TYPE II, AND CANDY APPLE RED POWDER COAT WITH TIGER DRYLAC 49/33340, OR EQUIV.
- FINISH: CRES PARTS; PASSIVATE PER AMS-QQ-P-35, TYPE II, OR EQUIV.
- ADJUST TORQUE ON SHAFT SUCH THAT MAXIMUM FORCE USED TO MOVE HANDLE FROM ONE DETENT POSITION TO ANOTHER SHALL NOT BE LESS THAN 3 POUNDS NOR MORE THAN 4.5 POUNDS.
- FINISH: NOTED SURFACE HAS DEXTER MIDLAND COATING .010 THK. MIN., COLOR GRAY, OR EQUIV.
- THREADS PER MIL-S-7742, OR EQUIV.
- ROTATION:180°, DETENTED EVERY 90°.
- ROTATION:90° LEFT OR RIGHT HAND, DETENTED EVERY 30°.
- ROTATION:90° LEFT HAND.
- ROTATION:90° RIGHT HAND.
- BASE & SHAFT ARE HEAT TREATED TO 190-210 KSI.
- SHAFT HAS 5/16 HEX BROACH IN HEAD OF SHAFT.
- NO TORQUE ADJUSTMENTS NECESSARY; TIGHTEN SHAFT AS MUCH AS POSSIBLE UPON INSTALLATION.
- APPLICABLE TO FAA-PMA REPLACEMENT OR MODIFICATION PARTS ONLY.
PER FAR 45.15, PARTS WILL BE IDENTIFIED WITH:
 - FAA-PMA.
 - SKYLARK IND. INC.
 - PART NO.
 - AIRCRAFT INSTALLATION ELIGIBILITY.
- THE FOLLOWING STATIC LOAD IS FOR REFERENCE USE ONLY. IT IS PROVIDED FOR CUSTOMER ENGINEERING TO DETERMINE THE GENERAL SUITABILITY OF THE PRODUCT FOR ITS INTENDED USE. ALTHOUGH SKYLARK IS PROVIDING THE REFERENCE STATIC LOAD, THE CUSTOMER IS ULTIMATELY RESPONSIBLE FOR CERTIFICATION OF THE PRODUCT FOR ITS SPECIFIC APPLICATION. REFERENCE STATIC LOAD: 2,250 LBS. MAX. (-501 TO -507, -517, -525 TO -537, -547, -555, -557, -559, -563, -565)
 - 1,000 LBS. MAX. (-509 TO -515, -519, -521, -539 TO -545, -549, -551)
 - 2,600 LBS. MAX. (-523, -553)
 - 1,300 LBS. MAX. (-561)

.310	.060	1.82	.500-20 UNF-3A	6.25		-565	RETAINER	4 1/16	120367-565
.310	.060	1.28	.500-20 UNF-3A	5.25		-563	RETAINER	4 1/16	120367-563
.310	.060	1.82	.500-20 UNF-3A	8.00		-561	RETAINER	4 1/16	120367-561
.310	.060	1.28	.500-20 UNF-3A	5.25		-559	RETAINER	4 1/16	120367-559
.310	.060	1.28	.500-20 UNF-3A	5.25		-557	RETAINER	4 1/16	120367-557
.310	.060	1.28	.500-20 UNF-3A	5.00		-555	RETAINER	4 1/16	120367-555
.310	.060	1.82	.500-20 UNF-3A	8.00		-553	RETAINER	3/8	120367-553
.310	.060	1.82	.500-20 UNF-3A	8.00		-551	RETAINER	5/16	120367-551
.310	.060	1.82	.500-20 UNF-3A	8.00		-549	RETAINER	4 1/16	120367-549
.310	.060	1.82	.500-20 UNF-3A	5.00		-547	RETAINER	4 1/16	120367-547
.310	.060	1.82	.500-20 UNF-3A	8.00		-545	RETAINER	5/16	120367-545
.560	.310	1.82	.500-20 UNF-3A	8.00		-543	RETAINER	5/16	120367-543
.440	.190	1.82	.500-20 UNF-3A	8.00		-541	RETAINER	5/16	120367-541
.310	.060	1.82	.500-20 UNF-3A	8.00		-539	RETAINER	5/16	120367-539
.310	.060	1.28	.500-20 UNF-3A	4.50		-537	RETAINER	5/16	120367-537
.310	.060	1.28	.500-20 UNF-3A	4.50		-535	RETAINER	4 1/16	120367-535
.310	.060	1.28	.375-24 UNF-3A	4.50		-533	RETAINER	5/16	120367-533
.310	.060	1.28	.375-24 UNF-3A	4.50		-531	RETAINER	4 1/16	120367-531
.310	.060	1.28	.500-20 UNF-3A	5.25		-529	RETAINER	4 1/16	120367-529
.310	.060	1.28	.500-20 UNF-3A	5.25		-527	RETAINER	4 1/16	120367-527
.310	.060	1.28	.500-20 UNF-3A	5.00		-525	RETAINER	4 1/16	120367-525
.310	.060	1.82	.500-20 UNF-3A	8.00		-523	RETAINER	3/8	120367-523
.310	.060	1.82	.500-20 UNF-3A	8.00		-521	RETAINER	5/16	120367-521
.310	.060	1.82	.500-20 UNF-3A	8.00		-519	RETAINER	4 1/16	120367-519
.310	.060	1.82	.500-20 UNF-3A	5.00		-517	RETAINER	4 1/16	120367-517
.310	.060	1.82	.500-20 UNF-3A	8.00		-515	RETAINER	5/16	120367-515
.560	.310	1.82	.500-20 UNF-3A	8.00		-513	RETAINER	5/16	120367-513
.440	.190	1.82	.500-20 UNF-3A	8.00		-511	RETAINER	5/16	120367-511
.310	.060	1.82	.500-20 UNF-3A	8.00		-509	RETAINER	5/16	120367-509
.310	.060	1.28	.500-20 UNF-3A	4.50		-507	RETAINER	5/16	120367-507
.310	.060	1.28	.500-20 UNF-3A	4.50		-505	RETAINER	4 1/16	120367-505
.310	.060	1.28	.375-24 UNF-3A	4.50		-503	RETAINER	5/16	120367-503
.310	.060	1.28	.375-24 UNF-3A	4.50		-501	RETAINER	4 1/16	120367-501

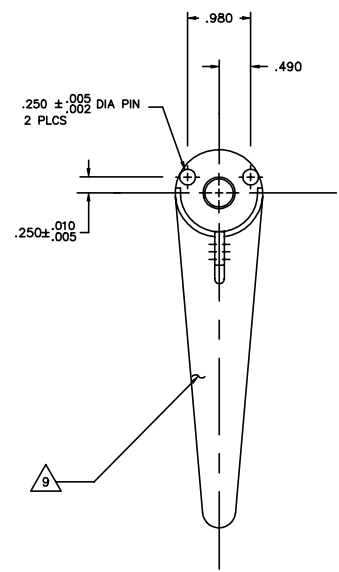
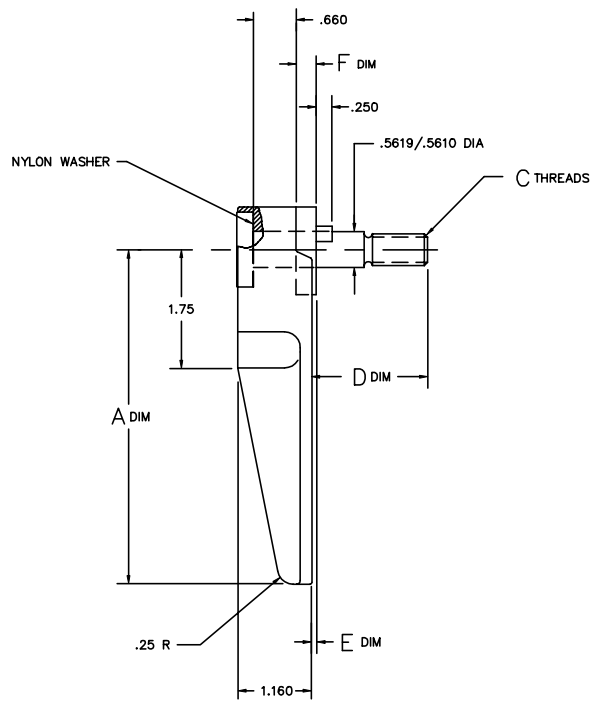
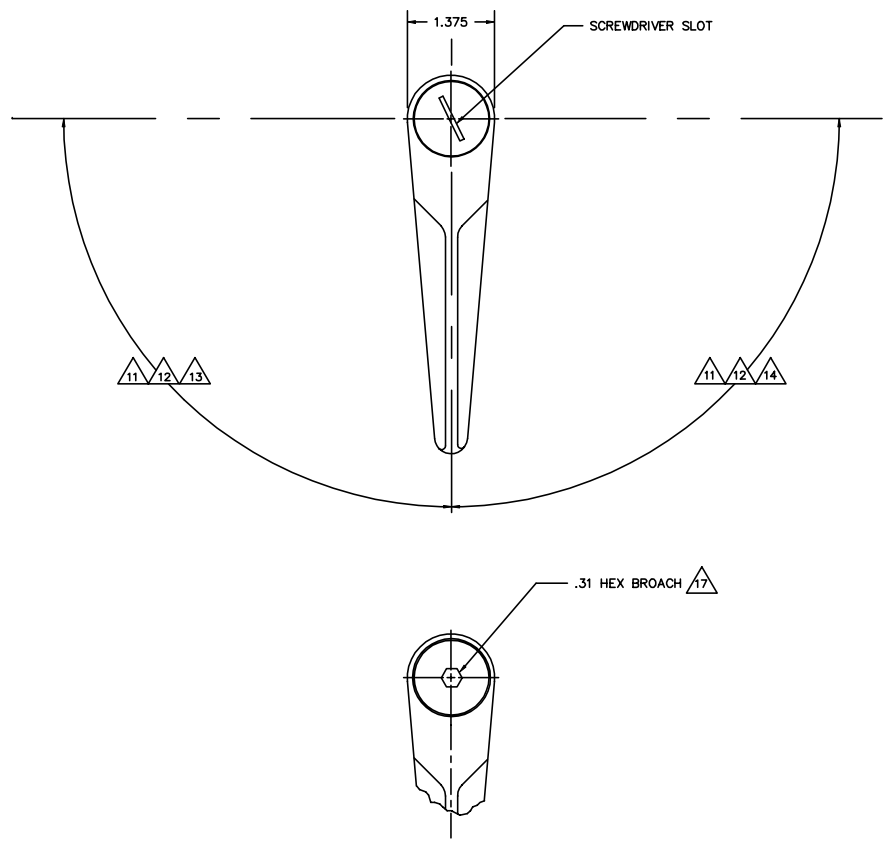
PARTS LIST		DRAWN BY		DATE		SCALE		SHEET	
F DIM	E DIM	D DIM	C THREADS	A DIM					
UNLESS OTHERWISE SPECIFIED		DRAWN BY S. CSIK		5/3/91		SCALE 1:1		SHEET 1 OF 2	
DIMENSIONS ARE IN INCHES		CHECKED DEAN VO		1/13/99		SCALE		SHEET	
TOLERANCES ON		ENGINEER T. CSIK		1/13/99		SCALE		SHEET	
DECIMALS ANGLES DRILLED HOLES		MFG P. MATSUOKA		1/22/99		SCALE		SHEET	
.0005 .001 1/16 1/8 3/16 1/2 3/4 1 1 1/2 2 3 4 5 6 8 10 12 16 20 25 30 36 48 60 72 96 120 150 180 240 300 360 480 600 720 960 1200		QC J. VIVIRITO		1/27/99		SCALE		SHEET	
DO NOT SCALE THIS DRAWING		USED ON		SIZE		CODE IDENT. NO.		DRAWING NO.	
MATERIAL - FINISH		NEXT ASBY		D		51941		20367	
MANUFACTURE IN ACCORDANCE WITH SKYLARK IND. INC. QUALITY CONTROL MANUAL QC.001									

20367 RETAINER

SKYLARK INDUSTRIES INCORPORATED
MONROVIA CALIFORNIA

THE INFORMATION AND DESIGN HEREIN WAS ORIGINATED BY AND IS THE PROPERTY OF SOLDEX INDUSTRIES INCORPORATED. SOLDEX INDUSTRIES INCORPORATED RESERVES ALL PATENT, PROPRIETARY, DESIGN MANUFACTURING INFORMATION, USE AND SALES RIGHTS HEREIN, AND TO ANY ARTICLES DEVELOPED THEREIN EXCEPT TO THE EXTENT RIGHTS ARE EXPRESSLY GRANTED TO OTHERS. THE FOLLOWING DOES NOT APPLY TO NON-PATENTABLE PARTS.

REVISIONS				
ZONE	LTR	DESCRIPTION	DATE	APPROVED
SEE SHT 1 FOR NOTES				



SOLDEX INDUSTRIES INCORPORATED REDWOOD CITY, CALIFORNIA			
20367 RETAINER			
SIZE	CODE IDENT. NO.	DRAWING NO.	REV.
D	51941	20367	M
SCALE	1:1	VT.	SHEET 2 OF 2