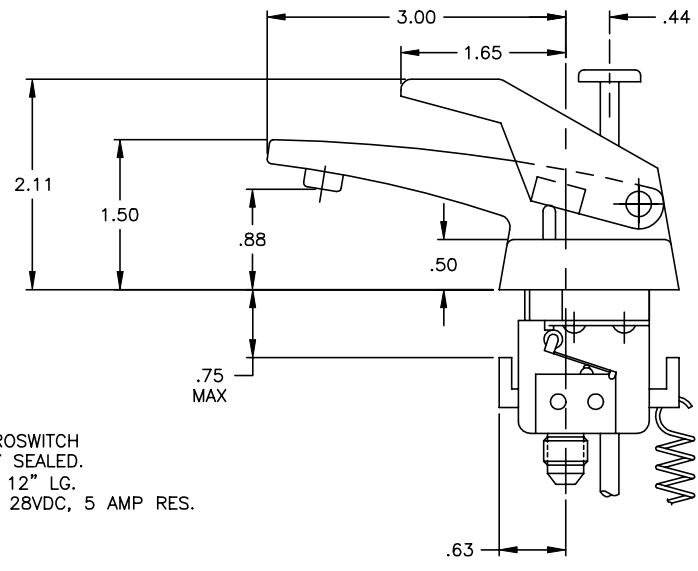
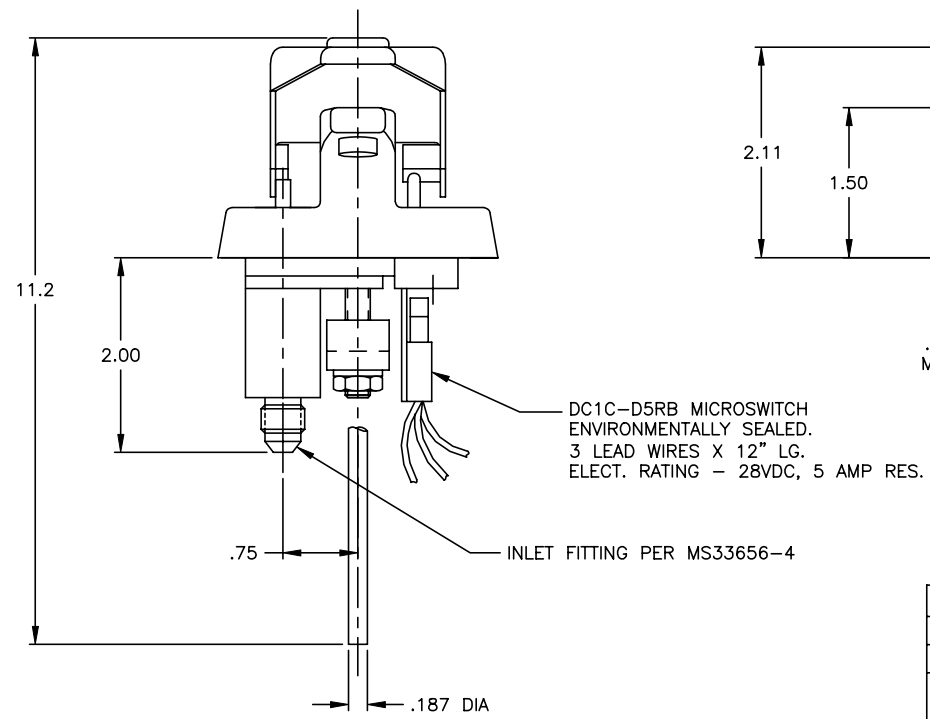
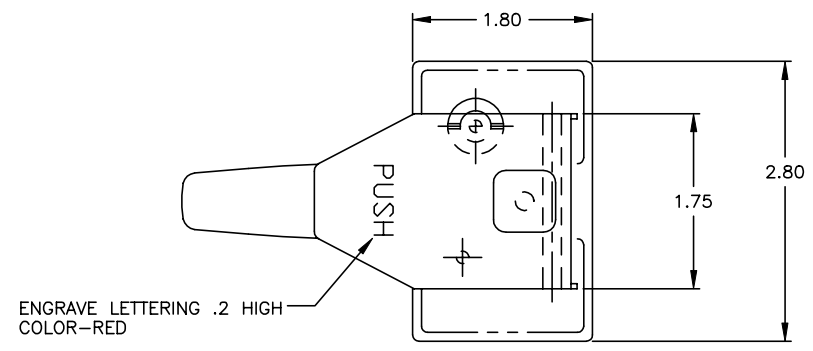


THE INFORMATION AND DESIGN HEREIN WAS ORIGINATED BY AND IS THE PROPERTY OF SKYLOCK INDUSTRIES INCORPORATED. SKYLOCK INDUSTRIES INCORPORATED RESERVES ALL PATENT, PROPRIETARY, DESIGN MANUFACTURING, REPRODUCTION, USE AND SALES RIGHTS THERE TO, AND TO ANY ARTICLE DISCLOSED THEREIN EXCEPT TO THE EXTENT RIGHTS ARE EXPRESSLY GRANTED TO OTHERS. THE FOREGOING DOES NOT APPLY TO VENDOR PROPRIETARY PARTS.

REVISIONS				
ZONE	LTR	DESCRIPTION	DATE	APPROVED
	NC	PRODUCTION RELEASE	4-30-96	T. CSIK
	A	REVISED HANDLE CONFIGURATION FOR MANUFACTURABILITY	9-4-96	T. CSIK
	B	SEE ECN B	12/9/98	T. CSIK

NOTES: UNLESS OTHERWISE SPECIFIED.

- MAT'L: FAUCET BODY, HANDLE, PLUNGER, VALVE - 300 SERIES CRES; GASKET AND O-RINGS - RUBBER.
- DECORATIVE FINISH: SATIN BRUSH APPEARANCE SURFACES.
- OPERATION: WHEN THE FAUCET HANDLE IS PRESSED DOWN, THE CARTRIDGE WILL OPEN AND THE MICROSWITCH WILL ACTIVATE A CUSTOMER SUPPLIED PUMP. AFTER RELEASING THE HANDLE, THE CARTRIDGE WILL CLOSE AND THE MICROSWITCH WILL DEACTIVATE AND STOP THE PUMP. WHEN THE WATER SYSTEM REQUIRES DRAINING, THE CARTRIDGE WILL SELF-VENT UNDER A SLIGHT VACUUM.



-401 FAUCET ASSY			
PART NO.	DESCRIPTION	MATERIAL	SIZE SPECIFICATION
PARTS LIST			
UNLESS OTHERWISE SPECIFIED		DRAWN BY	T. CSIK 4-30-96
DIMENSIONS ARE IN INCHES		CHECKED	D. VO 12/9/98
TOLERANCES ON		ENGINEER	T. CSIK 12/9/98
DECIMALS ANGLES DRILLED HOLES		PROJECT	P.MATSUOKA 12/16/98
.X ± .1 ± 0° 30' AND 10387		APPROVAL	J.VIVIRITO 12/28/98
.XX ± .03		SKYLOCK INDUSTRIES INCORPORATED MONROVIA CALIFORNIA U. S. A.	
.XXX ± .010			
DO NOT SCALE THIS DRAWING			
MATERIAL - FINISH		USED ON	SIZE CODE IDENT. NO. DRAWING NO.
NEXT ASSY			C 51941 90087
FINAL ASSY			SCALE 1/1 REV. B
		VT.	SHEET 1 OF 1

FLUID MEDIA	TYPE	OPERATING PRESSURE	OPERATING TEMP.	FLOW
PORTABLE WATER	SELF VENTING & BLEEDING	0-125 PSIG	35°F TO 220°F	70 OZ./MIN. AT 70°F AND 30P.S.I. INLET PRESSURE

D  
C  
B  
A

D  
C  
B  
A