

THREAD AND LENGTH DATA (LENGTH CODE IN SIXTEENTHS OF AN INCH)

CODE	THREAD SIZE	.250	.312	.375	.500	.625	.750	.875	1.000	1.250	1.500
632	.138-32 UNC-2A	4	5	6	8	10	12	14	16	20	24
832	.164-32 UNC-2A	4	5	6	8	10	12	14	16	20	24
1024	.190-24 UNC-2A	4	5	6	8	10	12	14	16	20	24
1032	.190-32 UNF-2A	4	5	6	8	10	12	14	16	20	24
1420	.250-20 UNC-2A	-	-	6	8	10	12	14	16	20	24
1428	.250-28 UNF-2A	-	-	6	8	10	12	14	16	20	24
51618	.312-18 UNC-2A	-	-	-	8	10	12	14	16	20	24

BASEPLATE MATERIAL AND FINISH

CODE	MATERIAL	FINISH
AX	ALUMINUM	NONE
AA	ALUMINUM	ANODIZE
CR	300 SERIES CRES	PASSIVATE
CRM	316 CRES	PASSIVATE
C	CARBON/EPOXY	NONE
G	GLASS/EPOXY	NONE

STUD MATERIAL AND FINISH

CODE	MATERIAL	FINISH
AX	ALUMINUM	NONE
CR	300 SERIES CRES	PASSIVATE
CRM	316 CRES	PASSIVATE
S	CARBON STEEL	ZINC PLATE

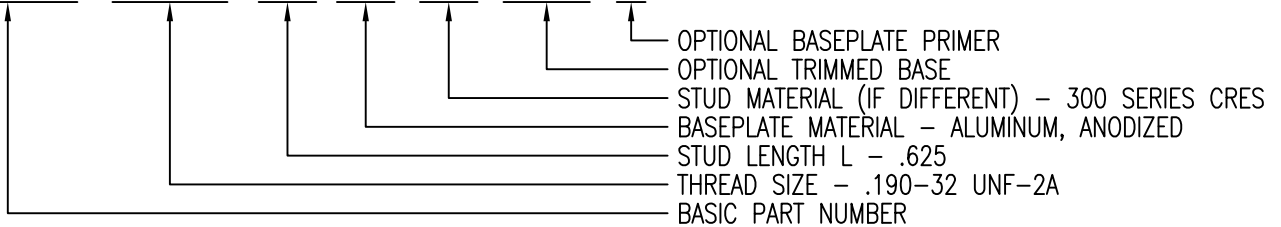
OPTIONAL BASEPLATE PRIMER

CODE	MATERIAL
P	EPOXY PRIMER

- NOTES: 1. GLASS/EPOXY AND CARBON/EPOXY BASE STUD BASE THICKNESS IS .110 MAX.
 2. GLASS/EPOXY AND CARBON/EPOXY COMPOSITE BASE STUDS HAVE CRES TRIM WASHER.

EXAMPLE PART NUMBER

CS125-1032-10 AA CR 750 P



UNLESS OTHERWISE SPECIFIED, ALL DIMENSIONS ARE IN INCHES AND TOLERANCES ARE AS SHOWN BELOW. DIMENSIONAL TOLERANCES AND SYMBOLS PER ANSI Y14.5M-1982.

PROPRIETARY PARTS SHOWN IN THIS DRAWING ARE THE SUBJECT OF ISSUED UNITED STATES AND FOREIGN PATENTS AND PATENTS PENDING. UNAUTHORIZED REPRODUCTION AND/OR DISTRIBUTION OF THIS DRAWING IS SPECIFICALLY PROHIBITED.

CLICK BOND

CARSON CITY
NEVADA 89706

CAD CS125-1

APPROVALS

DATE

TITLE

STUD, ADHESIVE BONDED

ANGLES ±1°

DRAWN *DAC*

18MAY12

.XX ±.03

CHECKED *DAC/mtm*

1SEP16

SIZE

CAGE CODE

DWG. NO.

REV.

.XXX ±.010

RELEASED *BDAL*

1SEP16

A

66530

CS125

12

.XXXX ±.001

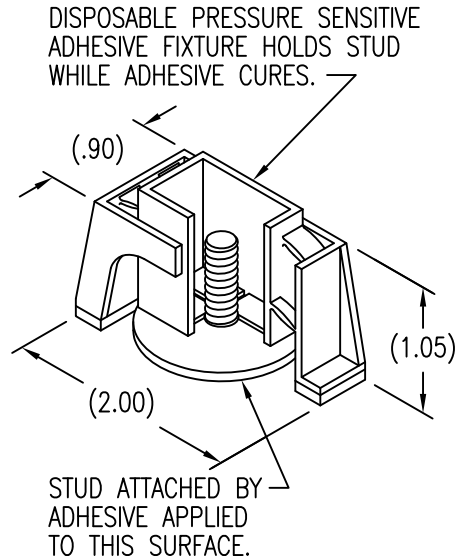
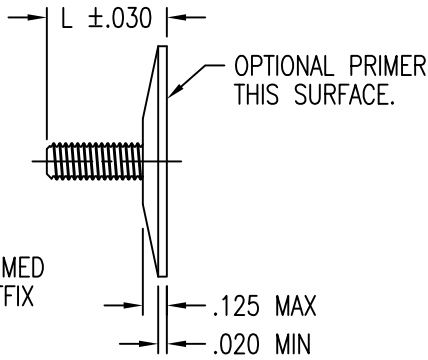
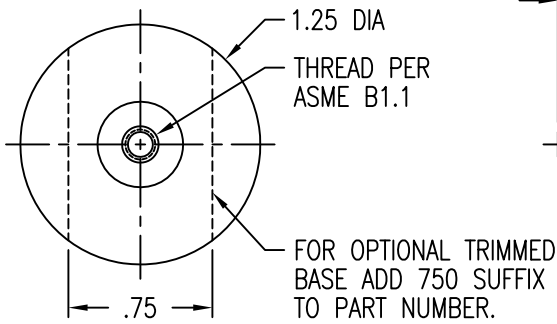
REVISED *BPEREZ*

1SEP16

SCALE 1/1

1SEP16

SHEET 1 OF 4



THREAD AND LENGTH DATA (LENGTH CODE IN SIXTEENTHS OF AN INCH)

CODE	THREAD SIZE	.250	.312	.375	.500	.625	.750	.875	1.000	1.250	1.500
632	.138-32 UNC-2A	4	5	6	8	10	12	14	16	20	24
832	.164-32 UNC-2A	4	5	6	8	10	12	14	16	20	24
1024	.190-24 UNC-2A	4	5	6	8	10	12	14	16	20	24
1032	.190-32 UNF-2A	4	5	6	8	10	12	14	16	20	24
1420	.250-20 UNC-2A	-	-	6	8	10	12	14	16	20	24
1428	.250-28 UNF-2A	-	-	6	8	10	12	14	16	20	24
51618	.312-18 UNC-2A	-	-	-	8	10	12	14	16	20	24

BASEPLATE MATERIAL AND FINISH

CODE	MATERIAL	FINISH
U	30% GLASS/PEI	NONE
V	40% GLASS/PEI	NONE

STUD MATERIAL AND FINISH

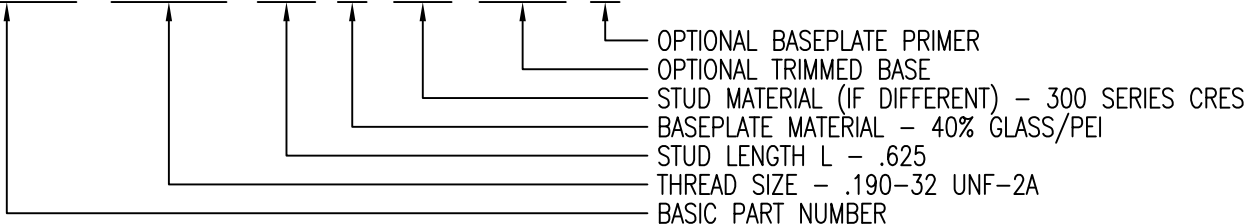
CODE	MATERIAL	FINISH
AX	ALUMINUM	NONE
CR	300 SERIES CRES	PASSIVATE
CRM	316 CRES	PASSIVATE
S	CARBON STEEL	ZINC PLATE

OPTIONAL BASEPLATE PRIMER

CODE	MATERIAL
P	EPOXY PRIMER

EXAMPLE PART NUMBER

CS125-1032-10 V CR 750 P



UNLESS OTHERWISE SPECIFIED, ALL DIMENSIONS ARE IN INCHES AND TOLERANCES ARE AS SHOWN BELOW. DIMENSIONAL TOLERANCES AND SYMBOLS PER ANSI Y14.5M-1982.

PROPRIETARY PARTS SHOWN IN THIS DRAWING ARE THE SUBJECT OF ISSUED UNITED STATES AND FOREIGN PATENTS AND PATENTS PENDING. UNAUTHORIZED REPRODUCTION AND/OR DISTRIBUTION OF THIS DRAWING IS SPECIFICALLY PROHIBITED.

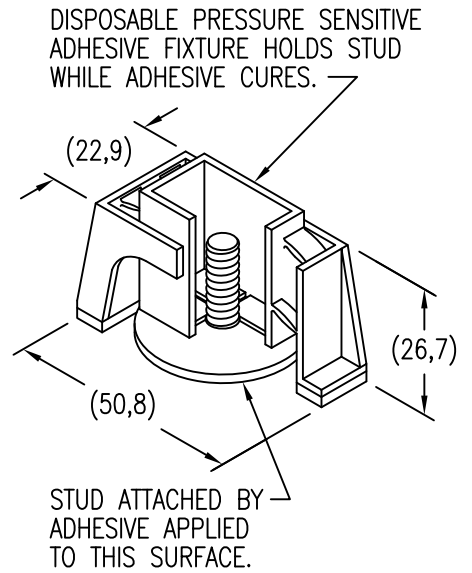
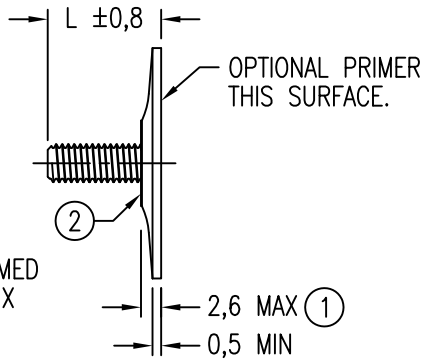
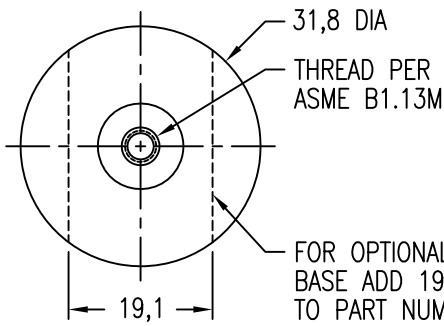
CLICK BOND

CARSON CITY
NEVADA 89706

CAD CS125-2

APPROVALS	DATE
DRAWN <i>DAC</i>	18MAY12
CHECKED <i>DAC/mtm</i>	1SEP16
RELEASED <i>ADAL</i>	1SEP16
REVISED <i>BPEREZ</i>	1SEP16

TITLE			
STUD, ADHESIVE BONDED			
SIZE	CAGE CODE	DWG. NO.	REV.
A	66530	CS125	12
SCALE	1/1		1SEP16
SHEET 2 OF 4			



THREAD AND LENGTH DATA (LENGTH CODE IN MILLIMETERS)

CODE	THREAD SIZE	6	8	10	12	15	18	20	25	30	35
3M	M3 X 0,5 6g	6M	8M	10M	12M	15M	18M	20M	25M	-	-
4M	M4 X 0,7 6g	6M	8M	10M	12M	15M	18M	20M	25M	30M	35M
5M	M5 X 0,8 6g	6M	8M	10M	12M	15M	18M	20M	25M	30M	35M
6M	M6 X 1,0 6g	-	-	10M	12M	15M	18M	20M	25M	30M	35M
8M	M8 X 1,25 6g	-	-	-	-	15M	18M	20M	25M	30M	35M

BASEPLATE MATERIAL AND FINISH

CODE	MATERIAL	FINISH
AX	ALUMINUM	NONE
AA	ALUMINUM	ANODIZE
CR	300 SERIES CRES	PASSIVATE
CRM	316 CRES	PASSIVATE
C	CARBON/EPOXY	NONE
G	GLASS/EPOXY	NONE

STUD MATERIAL AND FINISH

CODE	MATERIAL	FINISH
AX	ALUMINUM	NONE
CR	300 SERIES CRES	PASSIVATE
CRM	316 CRES	PASSIVATE
S	CARBON STEEL	ZINC PLATE

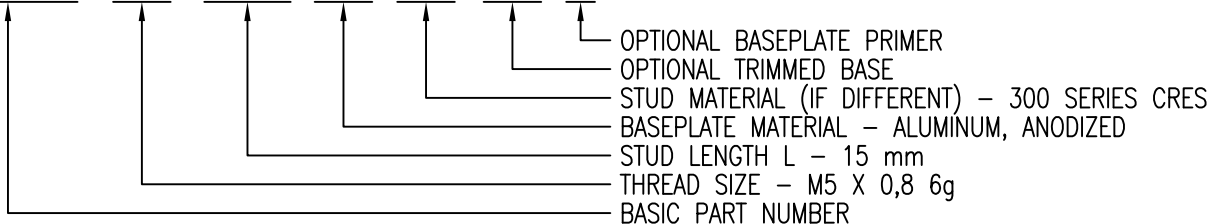
OPTIONAL BASEPLATE PRIMER

CODE	MATERIAL
P	EPOXY PRIMER

- NOTES: 1. GLASS/EPOXY AND CARBON/EPOXY BASE STUD BASE THICKNESS IS 2,8 MAX.
 2. GLASS/EPOXY AND CARBON/EPOXY COMPOSITE BASE STUDS HAVE CRES TRIM WASHER.

EXAMPLE PART NUMBER

CS125-5M 15M AA CR 19 P



UNLESS OTHERWISE SPECIFIED, ALL DIMENSIONS ARE IN MILLIMETERS AND TOLERANCES ARE AS SHOWN BELOW. DIMENSIONAL TOLERANCES AND SYMBOLS PER ANSI Y14.5M-1982.

PROPRIETARY PARTS SHOWN IN THIS DRAWING ARE THE SUBJECT OF ISSUED UNITED STATES AND FOREIGN PATENTS AND PATENTS PENDING. UNAUTHORIZED REPRODUCTION AND/OR DISTRIBUTION OF THIS DRAWING IS SPECIFICALLY PROHIBITED.

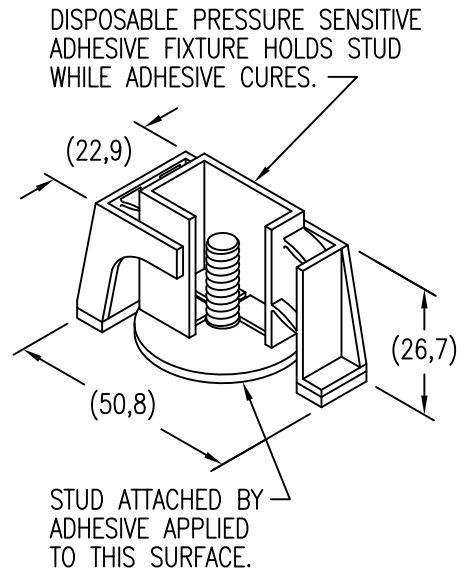
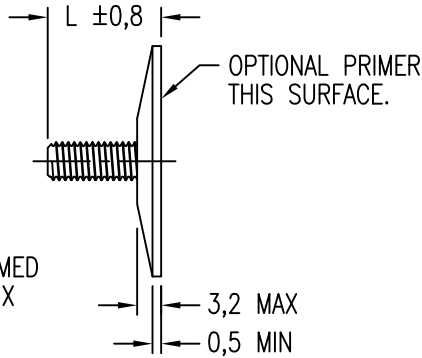
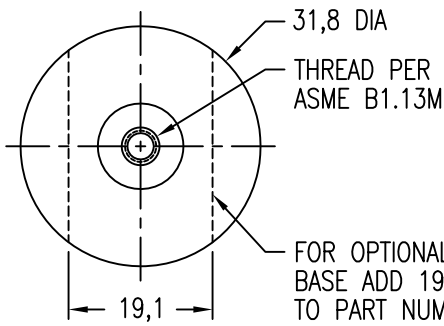
CLICK BOND

CARSON CITY
NEVADA 89706

CAD CS125-3 METRIC DIMENSIONS	
ANGLES	±1°
.X	±0,8
.XX	±0,25

APPROVALS	DATE
DRAWN <i>DAC</i>	18MAY12
CHECKED <i>DAC/mtm</i>	1SEP16
RELEASED <i>ADAL</i>	1SEP16
REVISED <i>BPEREZ</i>	1SEP16

TITLE STUD, ADHESIVE BONDED			
SIZE A	CAGE CODE 66530	DWG. NO. CS125 (METRIC)	REV. 12
SCALE 1/1	1SEP16	SHEET 3	OF 4



THREAD AND LENGTH DATA (LENGTH CODE IN MILLIMETERS)

CODE	THREAD SIZE	6	8	10	12	15	18	20	25	30	35
3M	M3 X 0,5 6g	6M	8M	10M	12M	15M	18M	20M	25M	-	-
4M	M4 X 0,7 6g	6M	8M	10M	12M	15M	18M	20M	25M	30M	35M
5M	M5 X 0,8 6g	6M	8M	10M	12M	15M	18M	20M	25M	30M	35M
6M	M6 X 1,0 6g	-	-	10M	12M	15M	18M	20M	25M	30M	35M
8M	M8 X 1,25 6g	-	-	-	-	15M	18M	20M	25M	30M	35M

BASEPLATE MATERIAL AND FINISH

CODE	MATERIAL	FINISH
U	30% GLASS/PEI	NONE
V	40% GLASS/PEI	NONE

STUD MATERIAL AND FINISH

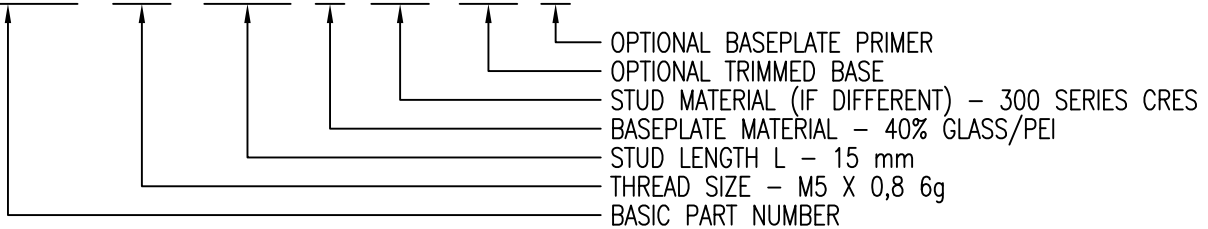
CODE	MATERIAL	FINISH
AX	ALUMINUM	NONE
CR	300 SERIES CRES	PASSIVATE
CRM	316 CRES	PASSIVATE
S	CARBON STEEL	ZINC PLATE

OPTIONAL BASEPLATE PRIMER

CODE	MATERIAL
P	EPOXY PRIMER

EXAMPLE PART NUMBER

CS125-5M 15M V CR 19 P



UNLESS OTHERWISE SPECIFIED, ALL DIMENSIONS ARE IN MILLIMETERS AND TOLERANCES ARE AS SHOWN BELOW. DIMENSIONAL TOLERANCES AND SYMBOLS PER ANSI Y14.5M-1982.

PROPRIETARY PARTS SHOWN IN THIS DRAWING ARE THE SUBJECT OF ISSUED UNITED STATES AND FOREIGN PATENTS AND PATENTS PENDING. UNAUTHORIZED REPRODUCTION AND/OR DISTRIBUTION OF THIS DRAWING IS SPECIFICALLY PROHIBITED.

GLICK BOND

CARSON CITY
 NEVADA 89706

CAD CS125-4 METRIC DIMENSIONS	
ANGLES	±1°
.X	±0,8
.XX	±0,25

APPROVALS	DATE
DRAWN <i>DAC</i>	18MAY12
CHECKED <i>DAC/mtm</i>	1SEP16
RELEASED <i>ADAL</i>	1SEP16
REVISED <i>BPEREZ</i>	1SEP16

TITLE STUD, ADHESIVE BONDED			
SIZE A	CAGE CODE 66530	DWG. NO. CS125 (METRIC)	REV. 12
SCALE 1/1	1SEP16		SHEET 4 OF 4