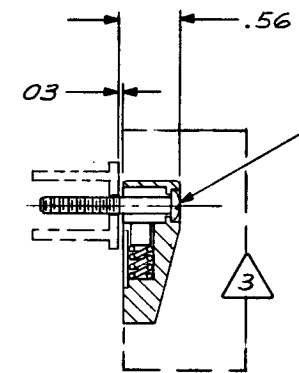
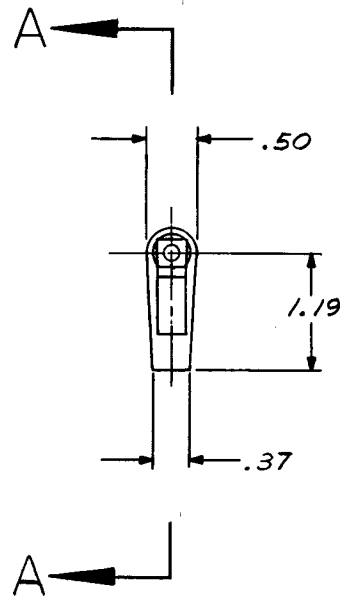
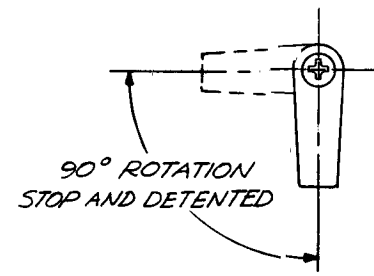


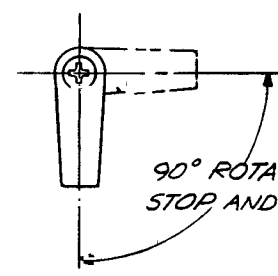
REVISIONS			
SYM	DESCRIPTION	DATE	BY
	EFFECTIVE ON	DISP EXIST PARTS	
A	SEE CHANGE NO. 10107		8-15-75 <i>MAJ</i>



SECTION A-A



20075-2 RETAINER (LEFT HAND)



20075-1 RETAINER (RIGHT HAND)

- 4. STATIC LOAD 250 LB MAX.
- 3. DECORATIVE FINISH: SATIN BUFF AND CLEAR ANODIZE.
- 2. FINISH: ALUM PARTS; ANODIZED CRES PARTS; PASSIVATED CAM; DRY FILM LUBRICATED
- 1. MATL: TURN; ALUM ALLOY DETENT PLUG; NYLON ALL OTHER PARTS 300 SERIES CRES.

NOTES: UNLESS OTHERWISE SPECIFIED

REQD	PART NUMBER	DESCRIPTION	MATERIAL OR NOTE
	-2	RETAINER	LEFT HAND 1 2
	-1	RETAINER	RIGHT HAND 1 2

APPLICATION		NEXT ASSY		USED ON		REF. NO.	

UNLESS OTHERWISE NOTED DIMENSIONS ARE IN INCHES. TOLERANCES ON:				CONTRACT NO.	
DECIMALS	XX ± .03	XXX ± .010			
ANGLES	± 0° 30'				
DRILLED HOLES	PER ANSI 10387				
SURFACE ROUGHNESS					
HEAT TREAT					
FINISH					
INSPECT					

SKYLOCK INDUSTRIES, INC.		SOUTH EL MONTE, CALIFORNIA	
DRAFTSMAN	<i>M. F. Jr</i>	3-12-73	
CHECKER	<i>E. G. Branks</i>	3-14-73	
ENGINEER	<i>Maureen Fote</i>	3-16-73	
PROD. APPD	<i>W. J. Winkler</i>	3-16-73	
APPROVAL	<i>Maureen Fote</i>	3-16-73	

SIZE	CODE IDENT NO.	SCALE	WT CALC	WT ACT	SHEET	OF
C	51941				20075	1 OF 1