



4  
 THE INFORMATION AND DESIGN HEREIN WAS ORIGINATED BY AND IS THE PROPERTY OF SKYLOCK INDUSTRIES INCORPORATED. SKYLOCK INDUSTRIES INCORPORATED RESERVES ALL PATENT, PROPRIETARY, DESIGN MANUFACTURING, REPRODUCTION, USE AND SALES RIGHTS THEREON, AND TO ANY ARTICLE DISCLOSED THEREIN EXCEPT TO THE EXTENT RIGHTS ARE EXPRESSLY GRANTED TO OTHERS. THE FOREGOING DOES NOT APPLY TO VENDOR PROPRIETARY PARTS.

3

TABULATION BLOCK

FIRST DASH NO.	SECOND DASH. NO.	THIRD DASH. NO.
FLAP SPRING CONFIGURATION	A DIM. $\pm .10$ - .00	B DIM. $\pm .10$ - .00
-1 NO SPRING	FIRST 2 DIGITS (INCHES) THIRD DIGITS (TENTH IN.)	FIRST 2 DIGITS (INCHES) THIRD DIGITS (TENTH IN.)
-3 	EXAMPLE: -056 = 5.6 INCHES	
-5 		


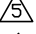

2

1

REVISIONS				
ZONE	LTR	DESCRIPTION	DATE	APPROVED
	D	SEE ECN D		

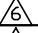
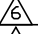

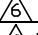
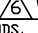
8. APPLICABLE TO FAA-PMA REPLACEMENT OR MODIFICATION PARTS ONLY. PER FAR 45.15, PARTS WILL BE IDENTIFIED WITH:
1. FAA-PMA.
  2. SKYLOCK IND. INC.
  3. PART NO.
  4. AIRCRAFT INSTALLATION ELIGIBILITY.


7. INSTALLATION INSTRUCTION:
- a. PLACE LATCH ASSY LESS RODS INTO DOOR CAVITY AND INSTALL (3) NO. 6-32 MOUNTING SCREWS.
  - b. PLACE BOLT AND ROD ASSEMBLIES INTO THEIR RESPECTIVE POSITIONS, TURN INTO LATCH BLOCK UNTIL THE DESIRED BOLT PROJECTION IS ACQUIRED.
  - c. INSTALL BOLT GUIDES RE-CHECK BOLT PROJECTIONS, THEN SECURE GUIDES USING APPROPRIATE SCREWS.

-  SPRING TO HOLD FLAP OPEN WHEN BOLT IS NOT PROPERLY ENGAGED.
-  SPRING TO RETURN FLAP TO CLOSED POSITION REGARDLESS OF BOLT POSITION.
4. LIFTING OF FLAP APPROX 50° RETRACTS BOLTS.
-  DECORATIVE FINISH REF.: SATIN BRUSH DIRECTION SHOWN.

2. FINISH REF.: ALUM. PARTS; CLEAR ANODIZE PER MIL-A-8625, TYPE II, CLASS 1. CRES PARTS; PASSIVATE PER AMS-QQ-P-35, TYPE II, OR EQUIV.
1. MAT'L REF.: PUSH RODS; 303 CRES, COND. A, PER AMS-5640N OR EQUIV SEGMENTS, SLIDE ASSY & RUNNER; NYLON 6/6 PER ASTM D-4066-PA114 OR EQUIV. OPTIONAL; NATURAL DELRIN PER ASTM-D-4181 OR EQUIV. ALL OTHER PARTS; 303 CRES, COND. A, PER 5640N, OR EQUIV.

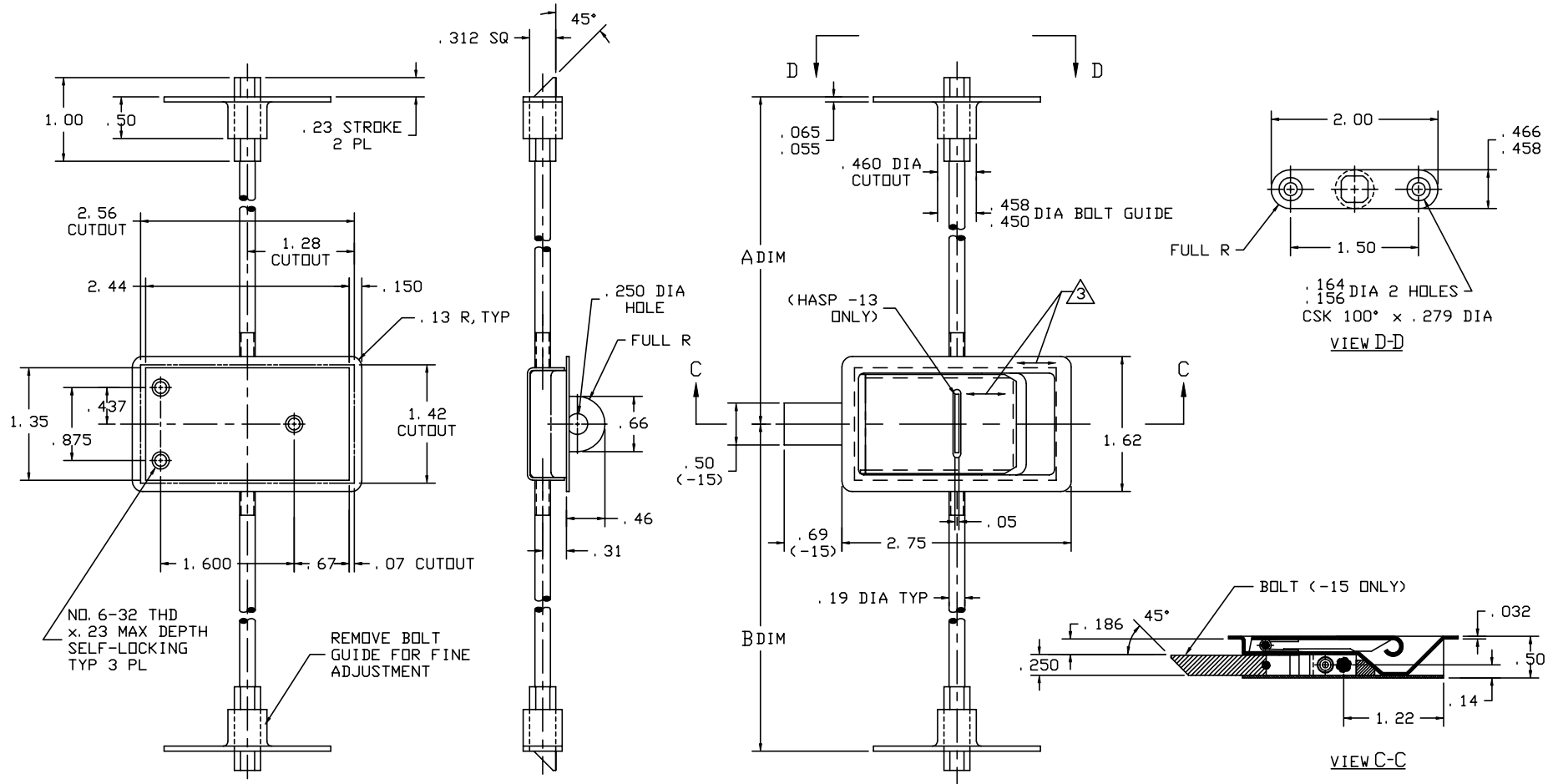
NOTES: UNLESS OTHERWISE SPECIFIED.

	-20	LATCH ASSY	FLAP SPRING OPEN 	120077-20
	-19	LATCH ASSY	FLAP SPRING OPEN 	120077-19
	-17	LATCH ASSY	FLAP SPRING OPEN 	120077-17
	-15	LATCH ASSY	FLAP SPRING OPEN 	120077-15
	-13	LATCH ASSY	FLAP SPRING OPEN  WITH HASP	120077-13
	-11	LATCH ASSY	20077-5 WITHOUT PUSH RODS, BOLTS AND BOLT GUIDES	120077-11
	-9	LATCH ASSY	20077-3 WITHOUT PUSH RODS, BOLTS AND BOLT GUIDES	120077-9
	-7	LATCH ASSY	20077-1 WITHOUT PUSH RODS, BOLTS AND BOLT GUIDES	120077-7
	-5	LATCH ASSY	FLAP SPRING OPEN	120077-5
	-3	LATCH ASSY	FLAP SPRING CLOSED	120077-3
	-1	LATCH ASSY	FLAP SPRING NONE	120077-1

QTY	PART NO.	DESCRIPTION	MATERIAL	SIZE	SPECIFICATION	MAKE FROM
PARTS LIST						
UNLESS OTHERWISE SPECIFIED			DRAWN BY ED WELSH		 SKYLOCK INDUSTRIES INCORPORATED MONROVIA CALIFORNIA U. S. A.	
DIMENSIONS ARE IN INCHES			CHECKED			
TOLERANCES ON			ENGINEER			
DECIMALS ANGLES DRILLED HOLES			MFG.			
.X ± .1 ± 0° 30' AND 10387			QC		DOOR BOLTING SYSTEM	
.XX ± .03						
.XXX ± .010						
DO NOT SCALE THIS DRAWING						
MATERIAL - FINISH			USED ON		SIZE	CODE IDENT. NO.
NEXT ASSY					C	51941
MANUFACTURE IN ACCORDANCE WITH SKYLOCK IND. INC., QUALITY CONTROL MANUAL QC.001					DRAWING NO.	REV.
					20077	D
SCALE 2: 1					VT.	SHEET 1 OF 3

THE INFORMATION AND DESIGN HEREIN WAS ORIGINATED BY AND IS THE PROPERTY OF SKYLOCK INDUSTRIES INCORPORATED. SKYLOCK INDUSTRIES INCORPORATED RESERVES ALL PATENT, PROPRIETARY, DESIGN MANUFACTURING, REPRODUCTION, USE AND SALES RIGHTS THERE TO, AND TO ANY ARTICLE DISCLOSED THEREIN EXCEPT TO THE EXTENT RIGHTS ARE EXPRESSLY GRANTED TO OTHERS. THE FOREGOING DOES NOT APPLY TO VENDOR PROPRIETARY PARTS.

REVISIONS				
ZONE	LTR	DESCRIPTION	DATE	APPROVED
		SEE SHT. 1 FOR NOTES		



-1 THRU -15 DOOR BOLTING SYSTEM

**SKYLOCK INDUSTRIES INCORPORATED**  
MONROVIA CALIFORNIA U. S. A.

**DOOR BOLTING SYSTEM**  
2 PT

SIZE	CODE IDENT. NO.	DRAWING NO.	REV.
C	51941	20077	D
SCALE	VT.		SHEET 2 OF 3
2: 1			

4

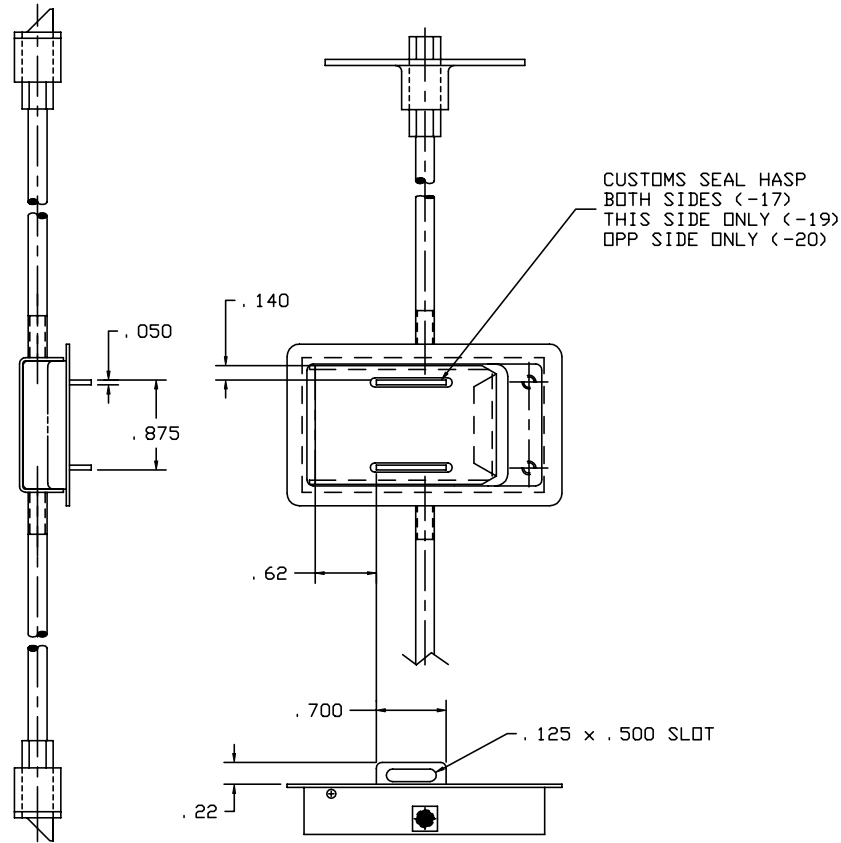
3

2

1


THE INFORMATION AND DESIGN HEREIN WAS ORIGINATED BY AND IS THE PROPERTY OF SKYLOCK INDUSTRIES INCORPORATED. SKYLOCK INDUSTRIES INCORPORATED RESERVES ALL PATENT, PROPRIETARY, DESIGN MANUFACTURING, REPRODUCTION, USE AND SALES RIGHTS THERE TO, AND TO ANY ARTICLE DISCLOSED THEREIN EXCEPT TO THE EXTENT RIGHTS ARE EXPRESSLY GRANTED TO OTHERS. THE FOREGOING DOES NOT APPLY TO VENDOR PROPRIETARY PARTS.

REVISIONS				
ZONE	LTR	DESCRIPTION	DATE	APPROVED
		SEE SHT. 1 FOR NOTES		



CUSTOMS SEAL HASP  
 BOTH SIDES (-17)  
 THIS SIDE ONLY (-19)  
 OPP SIDE ONLY (-20)

-17, -19, -20 DOOR BOLTING SYSTEM

 SKYLOCK INDUSTRIES INCORPORATED MONROVIA CALIFORNIA U. S. A.			
DOOR BOLTING SYSTEM 2 PT			
SIZE	CODE IDENT. NO.	DRAWING NO.	REV.
C	51941	20077	D
SCALE	2: 1	VT.	SHEET 3 OF 3

4

3

2

1