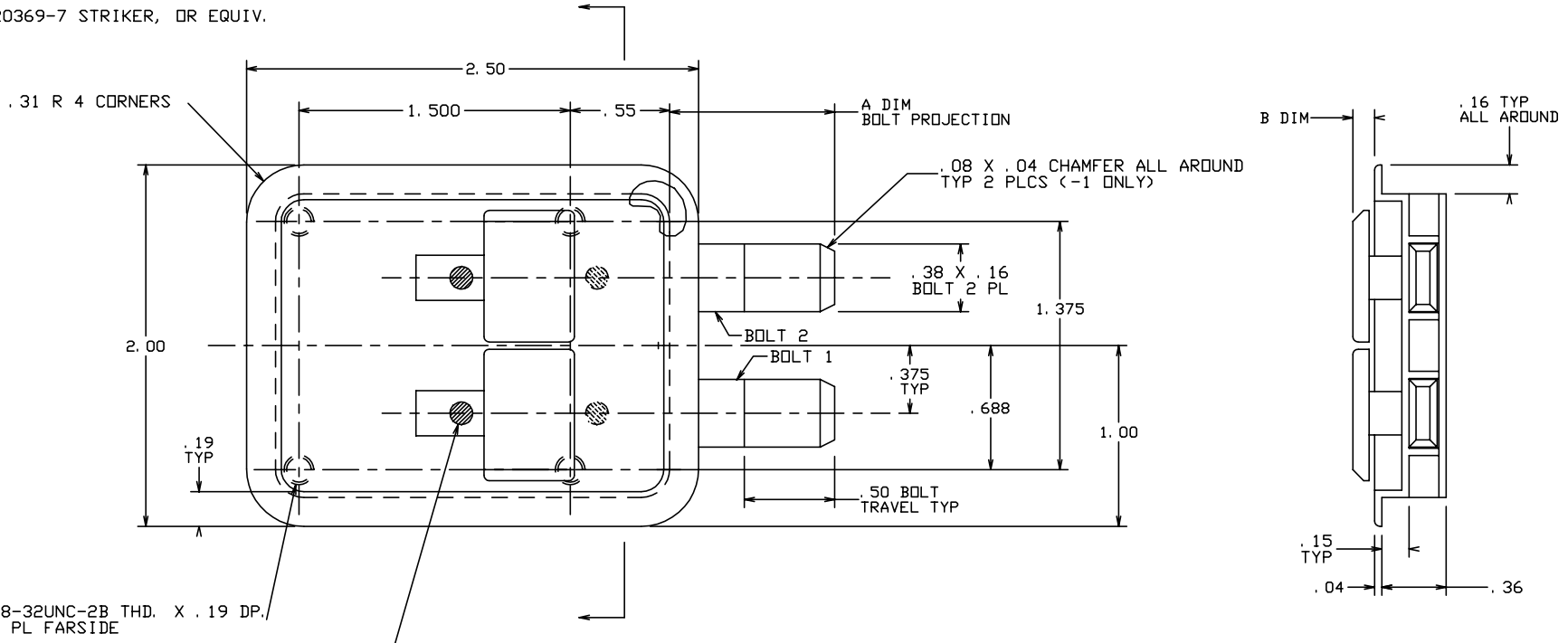


THE INFORMATION AND DESIGN HEREIN WAS ORIGINATED BY AND IS THE PROPERTY OF SKYLOCK INDUSTRIES INCORPORATED. SKYLOCK INDUSTRIES INCORPORATED RESERVES ALL PATENT, PROPRIETARY, DESIGN MANUFACTURING, REPRODUCTION, USE AND SALES RIGHTS THERE TO, AND TO ANY ARTICLE DISCLOSED THEREIN EXCEPT TO THE EXTENT RIGHTS ARE EXPRESSLY GRANTED TO OTHERS. THE FOREGOING DOES NOT APPLY TO VENDOR PROPRIETARY PARTS.

REVISIONS				
ZONE	LTR	DESCRIPTION	DATE	APPROVED
	NC	PRODUCTION RELEASE	8-30-93	T. CSIK
	A	ADDED .08 X .04 CHAMFER TO BOLT	9-27-93	T. CSIK

- NOTES: UNLESS OTHERWISE SPECIFIED.
- REMOVE ALL BURRS AND BREAK SHARP EDGES.
 - MAT'L: HANDLE; ALUM ALLOY, ALL OTHER COMPONENTS; 300 SERIES CRES.
 - PROTECTIVE FINISH: HANDLE; CLEAR ANODIZE, CRES COMPONENTS; PASSIVATE.
 - DECORATIVE FINISH: TOP OF HANDLE AND CASE FLANGE; SATIN BUFF.
 - THREADS COATED WITH VC-3 VIBRATITE.
 - BOLT IS DETENTED IN EXTENDED AND RETRACTED POSITIONS (DEADBOLT).
 - BOLT IS SPRING LOADED AND ALWAYS FREE TO LATCH (SLAM).
 - USE WITH 20369-7 STRIKER, OR EQUIV.



B DIM	A DIM	PART NO.	DESCRIPTION	MATERIAL	SIZE	SPECIFICATION	
.12	1.16	-3	LATCH ASSY	BOLT 1 TYPE	6	BOLT 2 TYPE	7
.12	1.16	-1	LATCH ASSY	BOLT 1 TYPE	6	BOLT 2 TYPE	6

PARTS LIST

UNLESS OTHERWISE SPECIFIED	DRAWN BY T. CSIK	8-30-93	SKYLOCK INDUSTRIES INCORPORATED MONROVIA CALIFORNIA U. S. A.			
DIMENSIONS ARE IN INCHES	CHECKED					
TOLERANCES ON	ENGINEER					
DECIMALS ANGLES DRILLED HOLES	PROJECT					
.X ± .1 ± 0° 30' AND 10387	APPROVAL		LATCH ASSY-DOUBLE BOLT			
.XX ± .03	APPROVAL T. CSIK	8-30-93				
.XXX ± .010						
DO NOT SCALE THIS DRAWING	USED ON		SIZE	CODE IDENT. NO.	DRAWING NO.	REV.
MATERIAL - FINISH			C	51941	20856	A
NEXT ASSY			SCALE	2:1	VT.	SHEET 1 OF 1
FINAL ASSY						