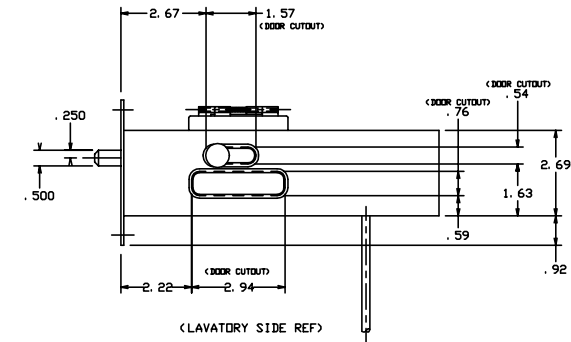
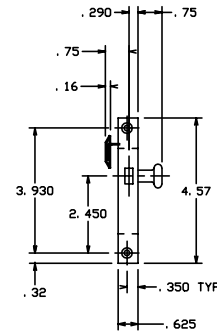
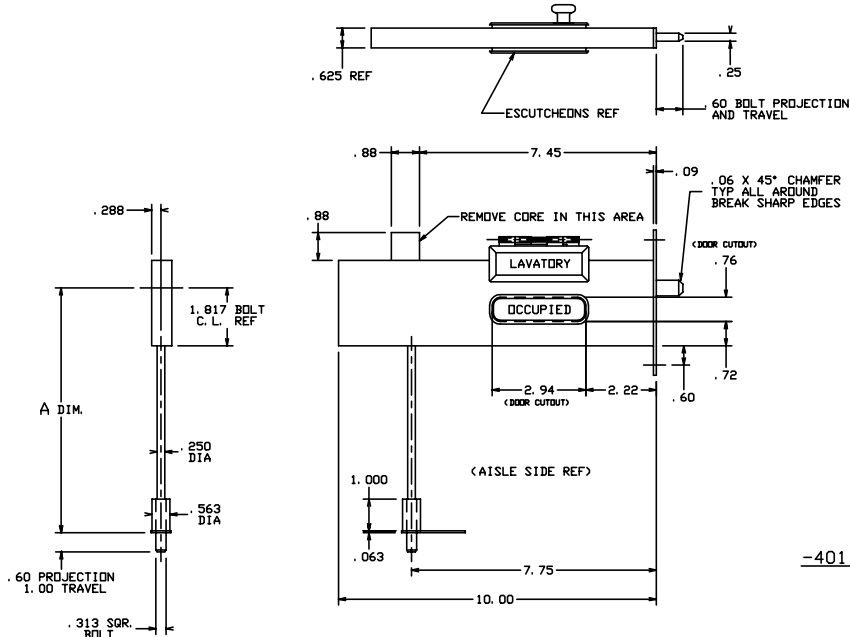


THE INFORMATION AND DESIGN HEREIN WAS DEVELOPED BY AND IS THE PROPERTY OF SKYLOCK INDUSTRIES INCORPORATED. SKYLOCK INDUSTRIES INCORPORATED RESERVES ALL PATENT, PROPRIETARY, DESIGN MANUFACTURING INFORMATION, USE AND SALES RIGHTS HEREIN, AND TO ANY ARTICLES DEVELOPED THEREIN EXCEPT TO THE EXTENT RIGHTS ARE EXPRESSLY GRANTED TO OTHERS. THE FOREGOING DOES NOT APPLY TO NON-PATENTABLE MATTER.

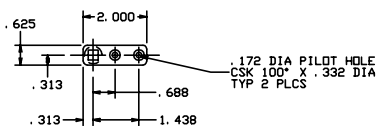
NOTES: UNLESS OTHERWISE SPECIFIED.

1. MATERIAL: CASE ASSY, ACTUATOR KNOB - 6061-T6 ALUM. ALLOY;
INDICATOR SIGN AND WINDOW - DELRIN;
BOLT AND ALL OTHER COMPONENTS - 300 SERIES CRES.
2. DECORATIVE FINISH: ALL VISIBLE METAL SURFACES - SATIN BUFF.
3. PROTECTIVE FINISH: ALUM. - CLEAR ANODIZE PER MIL-A-8625; CRES - PASSIVATE PER QQ-P-35.
4. INDICATOR SIGN: LETTERING TO BE CENTERED IN WINDOW. LETTERING STYLE - HELVETICA BOLD, UPPER CASE;
LETTERING COLOR - BLACK, UNLESS OTHERWISE SPECIFIED; LETTERING SIZE - .25" HIGH.
5. LATCH IS SPRING BIASED TO THE EXTENDED OR RETRACTED POSITIONS.
6. LIGHT FROM LAVATORY SIDE ILLUMINATES INDICATOR SIGN THRU TRANSLUCENT WINDOW.
7. LATCH OPERATION: LAVATORY SIDE ACTUATOR KNOB EXTENDS AND RETRACTS BOLT.
INDICATOR SIGN READS "VACANT" WHEN BOLT IS RETRACTED, AND "OCCUPIED" WHEN BOLT IS EXTENDED. FOR EMERGENCY ACCESS FROM AISLE SIDE, LIFT "LAVATORY" SIGN AND MOVE KNOB.

REVISIONS				
ZONE	LTR	DESCRIPTION	DATE	APPROVED
	NC	PRODUCTION RELEASE	6-29-94	T. C.
	A	DIM. IS 7.75 - WAS 7.70	7-14-94	T. C.
	B	REVISED G/N 4, IS ... UPPER CASE... WAS ... LOWER CASE...	1-18-95	T. C.
	C	ADDED DIM. .75 & .16 FOR FLAP FOR ACTUATOR KNOB DIM IS .75 WAS .80	4-11-95	T. C.
	D	ADDED -405 THRU -408	11-19-96	T. C.
	E	SEE ECN E	8-5-98	T. C.



-401 THRU -404 LATCH ASSY



*A' DIM. = 20.50 INCHES

EXAMPLE PART NO.: 20897-401-2050

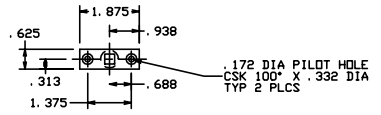
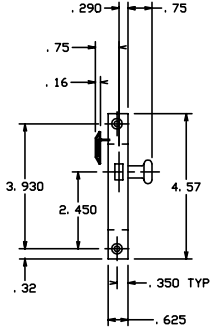
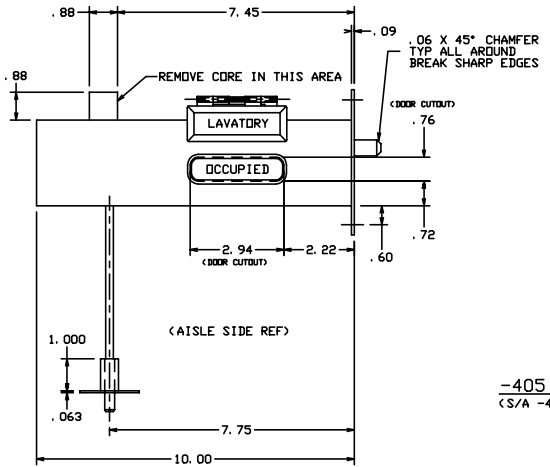
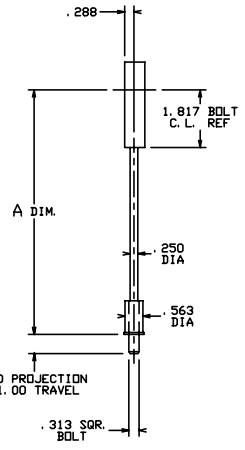
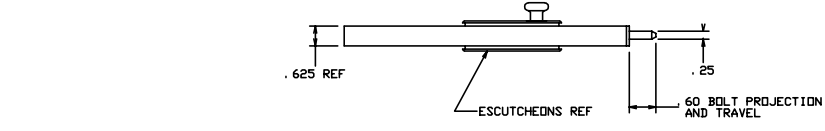
-412	INDICATOR LATCH	<DPP. -411>	<1.00 PANEL THICKNESS>	120897-412
-411	INDICATOR LATCH	<SHDWN>	<1.00 PANEL THICKNESS>	120897-411
-410	INDICATOR LATCH	<DPP. -409>	<.75 PANEL THICKNESS>	120897-410
-409	INDICATOR LATCH	<SHDWN>	<.75 PANEL THICKNESS>	120897-409
-408	INDICATOR LATCH	<DPP. -407>	<1.00 PANEL THICKNESS>	120897-408
-407	INDICATOR LATCH	<SHDWN>	<1.00 PANEL THICKNESS>	120897-407
-406	INDICATOR LATCH	<DPP. -405>	<.75 PANEL THICKNESS>	120897-406
-405	INDICATOR LATCH	<SHDWN>	<.75 PANEL THICKNESS>	120897-405
-404	INDICATOR LATCH	<DPP. -403>	<1.00 PANEL THICKNESS>	120897-404
-403	INDICATOR LATCH	<SHDWN>	<1.00 PANEL THICKNESS>	120897-403
-402	INDICATOR LATCH	<DPP. -401>	<.75 PANEL THICKNESS>	120897-402
-401	INDICATOR LATCH	<SHDWN>	<.75 PANEL THICKNESS>	120897-401

PART NO.	DESCRIPTION	MATERIAL	SIZE	QUANTITY	MAKE FROM
PARTS LIST					
UNLESS OTHERWISE SPECIFIED					
DIMENSIONS ARE IN INCHES					
CHECKED					
TELEPHONES ON					
DECIMALS ANGLES DRILLED HOLES					
PROJECT					
APPROVAL					
DO NOT SCALE THIS DRAWING					
APPROVAL					
MATERIAL - FINISH					
USED ON					
NEXT ASSY					
MANUFACTURE IN ACCORDANCE WITH SKYLOCK QUALITY CONTROL MANUAL 001.					
SIZE	CODE	SYCH. NO.	DRAWING NO.	REV.	
D	51941		20897	E	
SCALE	1:1	VT.	SHEET	1	OF 3

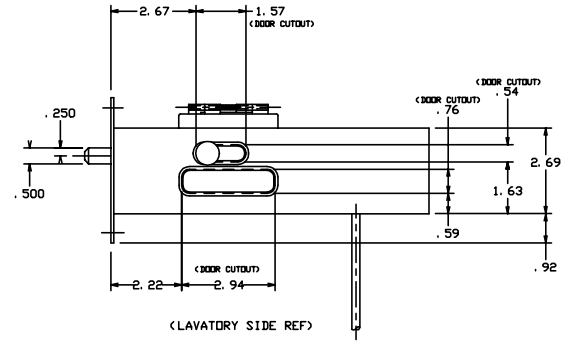
SKYLOCK INDUSTRIES INCORPORATED
RIVERSIDE CALIFORNIA

INDICATOR LATCH,
SLIDING DOOR

REVISIONS				
ZONE	LTR	DESCRIPTION	DATE	APPROVED
SEE SH. 1 FOR NOTES				



-405 THRU -408 LATCH ASSY
 <S/A -401 THRU -404 EXCEPT BOLT GUIDE>

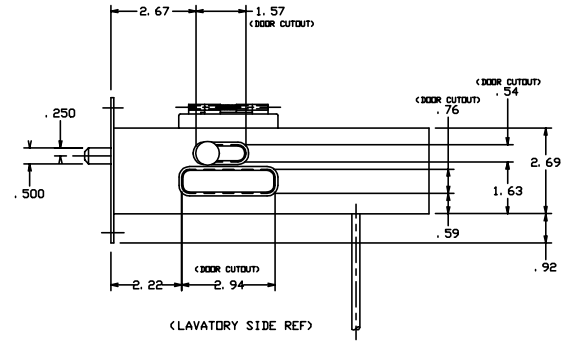
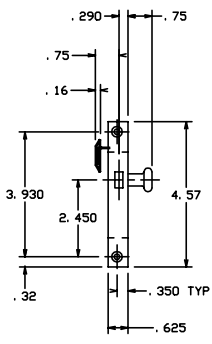
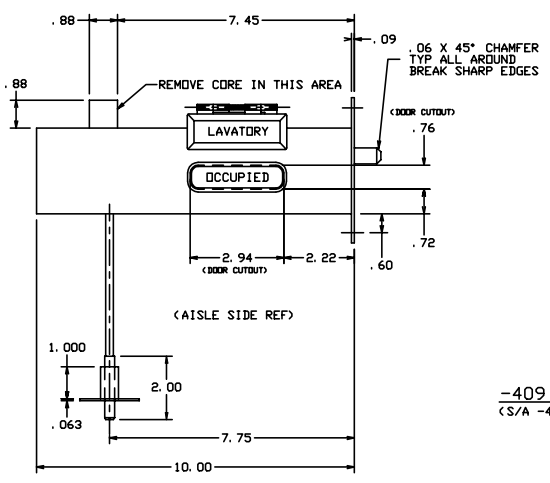
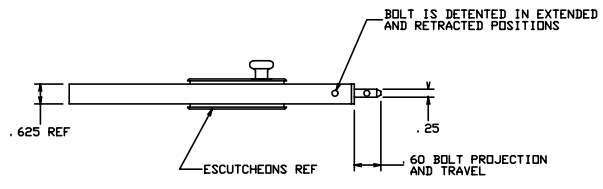


SOLIDEX INDUSTRIES, INCORPORATED
 REDWOOD CALIFORNIA

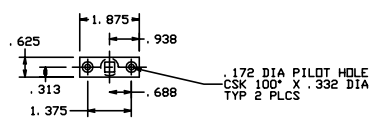
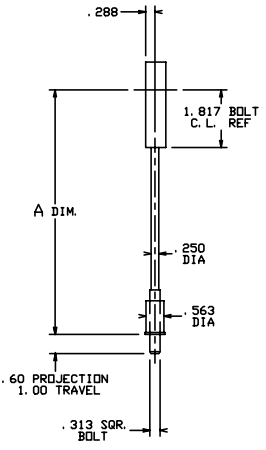
INDICATOR LATCH,
 SLIDING DOOR

SIZE D	CODE IDENT. NO. 51941	DRAWING NO. 20897	REV. E
SCALE 1:1	VT.	SHEET 2 OF 3	

REVISIONS				
ZONE	LTR	DESCRIPTION	DATE	APPROVED
		SEE SHT. 1 FOR NOTES		



-409 THRU -412 LATCH ASSY
 <S/A -405 THRU -408 EXCEPT AS NOTED>



SOLDEX INDUSTRIES, INCORPORATED
 REDWOOD CITY, CALIFORNIA

INDICATOR LATCH, SLIDING DOOR

SIZE D	CODE IDENT. NO. 51941	DRAWING NO. 20897	REV. E
SCALE 1:1	VT.	SHEET 3 OF 3	