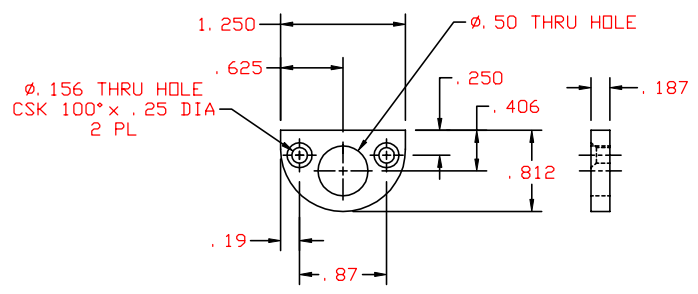
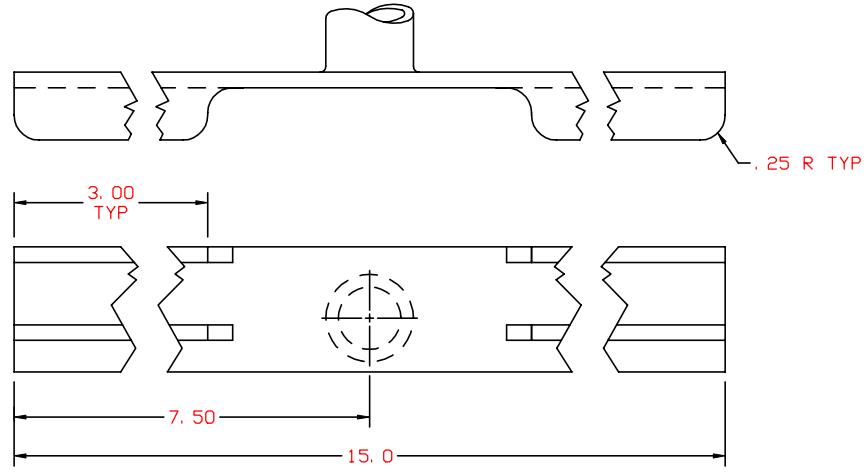
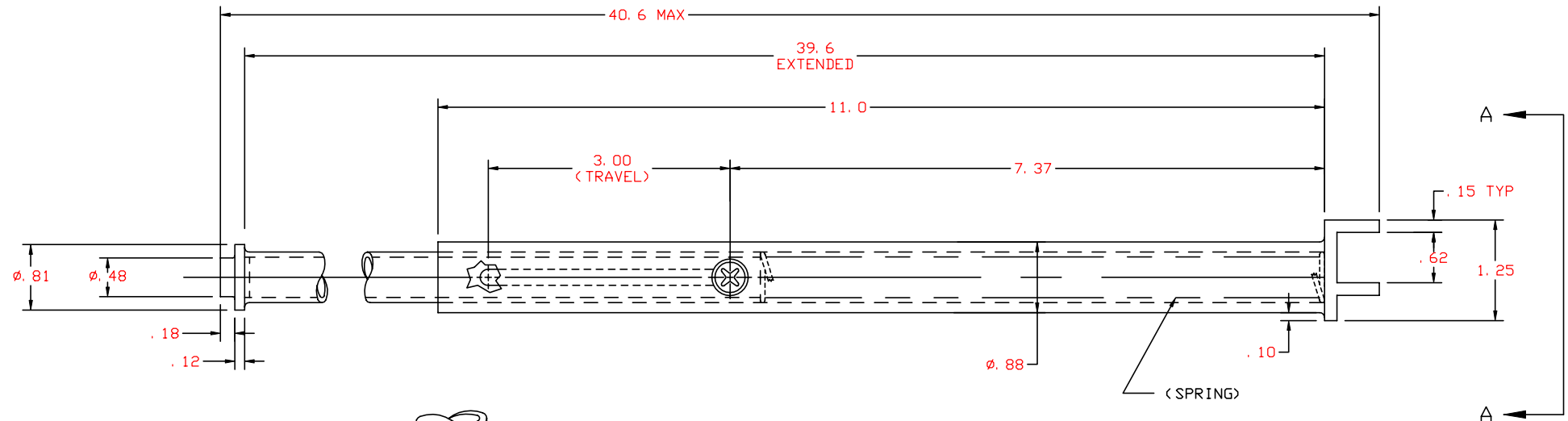


THE INFORMATION AND DESIGN HEREIN WAS ORIGINATED BY AND IS THE PROPERTY OF SKYLOCK INDUSTRIES INCORPORATED. SKYLOCK INDUSTRIES INCORPORATED RESERVES ALL PATENT, PROPRIETARY, DESIGN MANUFACTURING, REPRODUCTION, USE AND SALES RIGHTS THERE TO, AND TO ANY ARTICLE DISCLOSED THEREIN EXCEPT TO THE EXTENT RIGHTS ARE EXPRESSLY GRANTED TO OTHERS. THE FOREGOING DOES NOT APPLY TO VENDOR PROPRIETARY PARTS.

REVISIONS				
ZONE	LTR	DESCRIPTION	DATE	APPROVED
	C	SEE ECN C	4/6/97	T. CSIK



VIEW A-A

-3 RETAINER PLATE

3. PER FAR 45.15. PARTS WILL BE IDENTIFIED WITH:
1. FAA-PMA.
 2. SKYLOCK IND. INC.
 3. PART NO.
 4. AIRCRAFT ELIGIBILITY.
2. FINISH REF.: ALUM PARTS; CLEAR ANODIZE PER MIL-A-8625, TYPE II, CLASS 1 OR EQUIV. CRES PARTS; PASSIVATE PER AMS-QQ-P-35, TYPE II, OR EQUIV.
1. MAT'L REF.: RETAINER PLATE AND SPRING; 300 SERIES CRES, PER AMS-5640N OR EQUIV. ALL OTHER PARTS; 6061-T6/T651 PER ASTM B-221 OR EQUIV.
- REMOVE ALL BURRS AND SHARP CORNERS.
- NOTES: UNLESS OTHERWISE SPECIFIED

		-3 RETAINER PLATE		1138-3
		-401 RETAINER BAR		120151-401
PART NO.	DESCRIPTION	MATERIAL	SIZE	APPLICATION
				MAKE FROM
PARTS LIST				
UNLESS OTHERWISE SPECIFIED		DRAWN BY	M. FORTES	12-2-74
DIMENSIONS ARE IN INCHES		CHECKED	L. GARCIA	3/31/99
TOLERANCES ON		ENGINEER	T. CSIK	4/6/99
DECIMALS ANGLES DRILLED HOLES		MFG	P. MATSUOKA	4/12/99
.X ± .1 ± 0° 30' AND 10387		QC	J. VIVIRITO	4/20/99
.XXX ± .010				
DO NOT SCALE THIS DRAWING				
MATERIAL - FINISH	USED ON	SIZE	CODE IDENT. NO.	DRAWING NO.
		C	51941	20151
NEXT ASSY				REV. C
MANUFACTURE IN ACCORDANCE WITH SKYLOCK IND. INC., QUALITY CONTROL MANUAL QC 001		SCALE	2:1	VT. SHEET 1 OF 1

RETAINER BAR