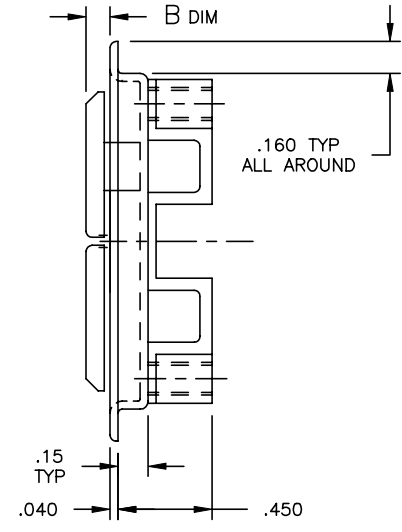
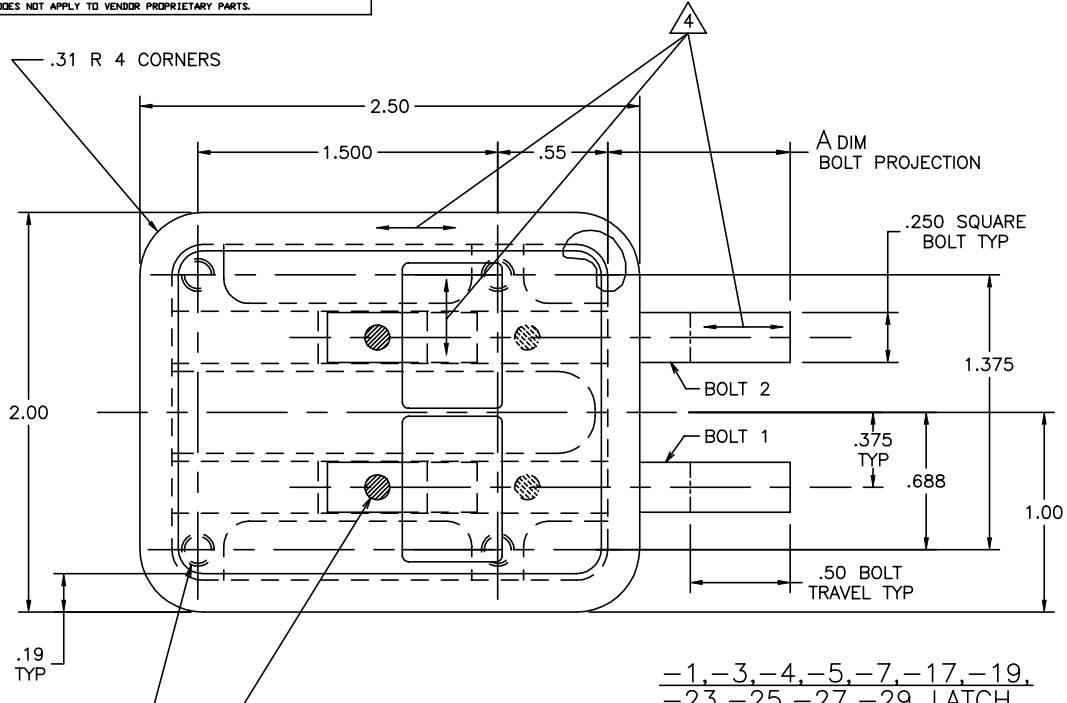


THE INFORMATION AND DESIGN HEREIN WAS ORIGINATED BY AND IS THE PROPERTY OF SKYLOCK INDUSTRIES INCORPORATED. SKYLOCK INDUSTRIES INCORPORATED RESERVES ALL PATENT, PROPRIETARY, DESIGN MANUFACTURING, REPRODUCTION, USE AND SALES RIGHTS THERE TO, AND TO ANY ARTICLE DISCLOSED THEREIN EXCEPT TO THE EXTENT RIGHTS ARE EXPRESSLY GRANTED TO OTHERS. THE FOREGOING DOES NOT APPLY TO VENDOR PROPRIETARY PARTS.

Q SEE ECN Q 10/21/99 T. CSIK

ZONE	LTR	DESCRIPTION	DATE	APPROVED
	K	ADDED GREEN DOT TO SLAM BOLTS	6-21-95	T. CSIK
	L	ADDED -23,-25	11-13-97	T. CSIK
	M	ADDED -27	12-23-97	T. CSIK
	N	ADDED G/N 8, AND SHTS 4 & 5, ADDED -29	6-4-98	T. CSIK
	P	SEE ECN P	4/6/99	T. CSIK



SLAM AND DEADBOLTS HAVE GREEN DOT VISIBLE WHEN EXTENDED, SLAM AND DEADBOLTS HAVE RED DOT VISIBLE WHEN RETRACTED

#8-32UNC-2B THD. X .19 DP.  
4 PL FAR SIDE  
5

9. APPLICABLE TO FAA-PMA REPLACEMENT OR MODIFICATION PARTS ONLY. PER FAR 45.15, PARTS WILL BE IDENTIFIED WITH:
1. FAA-PMA.
  2. SKYLOCK IND. INC.
  3. PART NO.
  4. AIRCRAFT INSTALLATION ELIGIBILITY.
8. REMOVED.

- 7 BOLT IS SPRING LOADED AND ALWAYS FREE TO LATCH (SLAM).
- 6 BOLT IS DETENTED IN EXTENDED AND RETRACTED POSITIONS (DEADBOLT).
- 5 THREADS COATED WITH VC-3 VIBRATITE.
- 4 REF. DECORATIVE FINISH: TOP OF HANDLE; SATIN BRUSH DIRECTION NOTED. CASE ASSY; GLASS BEAD ALL SURFACES, USING #70-140 GLASS BEAD MEDIA AT 50-60 PSI; AND SATIN BRUSH FLANGE DIRECTION NOTED
- 3 REF. PROTECTIVE FINISH: HANDLE; ANODIZE PER MIL-A-8625. CRES COMPONENTS; PASSIVATE PER AMS-QQ-P-35.
2. REF. MAT'L: HANDLE; 6061-T6/T651 PER ASTM B-221, OR EQUIV. CASE ASSY & BOLT; 303 CRES. COND. A, PER AMS-5640N OR EQUIV.
1. REMOVE ALL BURRS AND BREAK SHARP EDGES.
- NOTES: UNLESS OTHERWISE SPECIFIED.

(PARTS LIST CONTINUED ON SHT. 2)

.07	.91	-29	LATCH	BOLT 1 TYPE 7	BOLT 2 TYPE 7	120754-229
.12	.91	-27	LATCH	BOLT 1 TYPE 7	BOLT 2 TYPE 7	120754-227
.00	.91	-25	LATCH	BOLT 1 TYPE 6	BOLT 2 TYPE 7	120754-225
.00	.91	-23	LATCH	BOLT 1 TYPE 6	BOLT 2 TYPE 6	120754-223
.07	.91	-19	LATCH	BOLT 1 TYPE 6	BOLT 2 TYPE 7	120754-219
.07	.91	-17	LATCH	BOLT 1 TYPE 6	BOLT 2 TYPE 6	120754-217
.12	1.16	-7	LATCH	BOLT 1 TYPE 6	BOLT 2 TYPE 7	120754-207
.12	1.16	-5	LATCH	BOLT 1 TYPE 6	BOLT 2 TYPE 6	120754-205
.12	.91	-4	LATCH	BOLT 1 TYPE 7	BOLT 2 TYPE 6	120754-204
.12	.91	-3	LATCH	BOLT 1 TYPE 6	BOLT 2 TYPE 7	120754-203
.12	.91	-1	LATCH	BOLT 1 TYPE 6	BOLT 2 TYPE 6	120754-201

B DIM	A DIM	PART NO.	DESCRIPTION	MATERIAL	SIZE	SPECIFICATION	MAKE FROM
PARTS LIST							
UNLESS OTHERWISE SPECIFIED				DRAWN BY T. CSIK 10-29-91			
DIMENSIONS ARE IN INCHES				CHECKED ED WELSH 3/26/99			
TOLERANCES ON				ENGINEER T. CSIK 4/6/99			
DECIMALS ANGLES DRILLED HOLES				MFG P. MATSUOKA 4/12/99			
.X .1 0° 30' AND 10387				Q.C. J. VIVIRITO 4/20/99			
.XX .03							
.XXX .010							
DO NOT SCALE THIS DRAWING							
MATERIAL - FINISH				SIZE C 51941			
MANUFACTURE IN ACCORDANCE WITH SKYLOCK IND. INC. QUALITY CONTROL MANUAL QC.001				DRAWING NO. 20754			
				REV. Q			
				SCALE 2:1			
				SHEET 1 OF 3			

SKYLOCK INDUSTRIES INCORPORATED  
MONROVIA CALIFORNIA U. S. A.

LATCH-DOUBLE BOLT

THE INFORMATION AND DESIGN HEREIN WAS ORIGINATED BY AND IS THE PROPERTY OF SKYLOCK INDUSTRIES INCORPORATED. SKYLOCK INDUSTRIES INCORPORATED RESERVES ALL PATENT, PROPRIETARY, DESIGN MANUFACTURING, REPRODUCTION, USE AND SALES RIGHTS THERE TO, AND TO ANY ARTICLE DISCLOSED THEREIN EXCEPT TO THE EXTENT RIGHTS ARE EXPRESSLY GRANTED TO OTHERS. THE FOREGOING DOES NOT APPLY TO VENDOR PROPRIETARY PARTS.

REVISIONS				
ZONE	LTR	DESCRIPTION	DATE	APPROVED
		SEE SHT. 1 FOR NOTES		

D

C

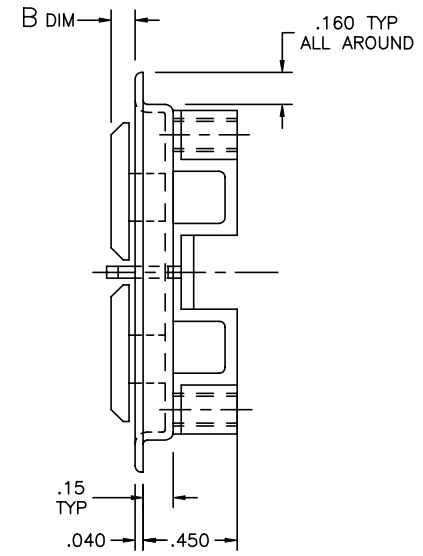
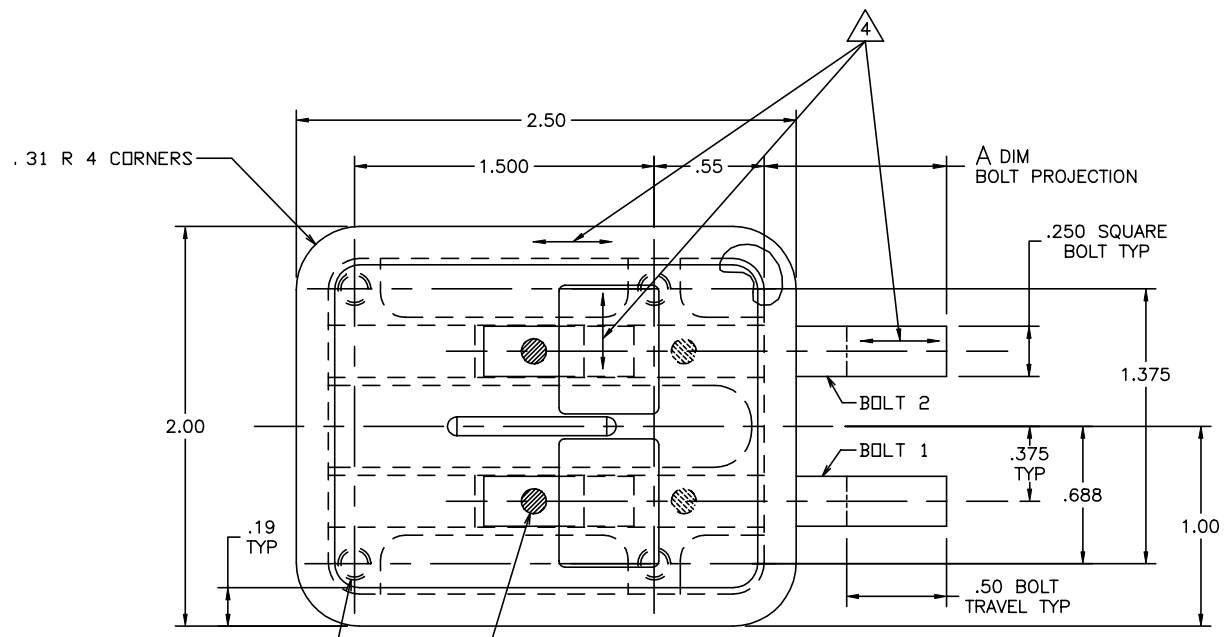
B

A

D

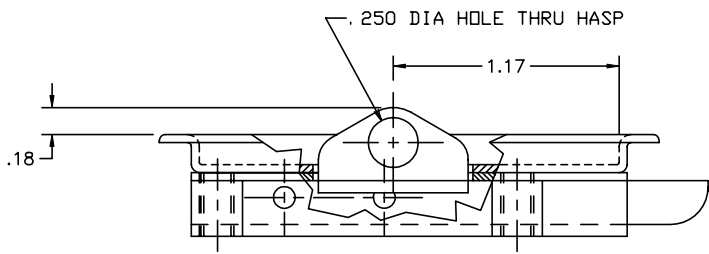
B

A



5 #8-32UNC-2B THD. X .19 DP.  
4 PL FAR SIDE

SLAM AND DEADBOLTS HAVE GREEN DOT VISIBLE WHEN EXTENDED, SLAM AND DEADBOLTS HAVE RED DOT VISIBLE WHEN RETRACTED




-9, -11, -13, -15 LATCH (SHOWN)

(PARTS LIST CONTINUED ON SHT. 3)

.12	1.16	-15	LATCH	BOLT 1 TYPE	6	BOLT 2 TYPE	7	120754-215
.12	1.16	-13	LATCH	BOLT 1 TYPE	6	BOLT 2 TYPE	6	120754-213
.12	.91	-11	LATCH	BOLT 1 TYPE	6	BOLT 2 TYPE	7	120754-211
.12	.91	-9	LATCH	BOLT 1 TYPE	6	BOLT 2 TYPE	6	120754-209
B DIM	A DIM	PART NO.	DESCRIPTION	MATERIAL	SIZE	SPECIFICATION	MAKE FROM	

PARTS LIST

 SKYLOCK INDUSTRIES INCORPORATED  
MONROVIA CALIFORNIA U. S. A.

LATCH-DOUBLE BOLT

SIZE	CODE IDENT. NO.	DRAWING NO.	REV.
C	51941	20754	Q

SCALE 2:1    WT.    SHEET 2 OF 3

4

3

2

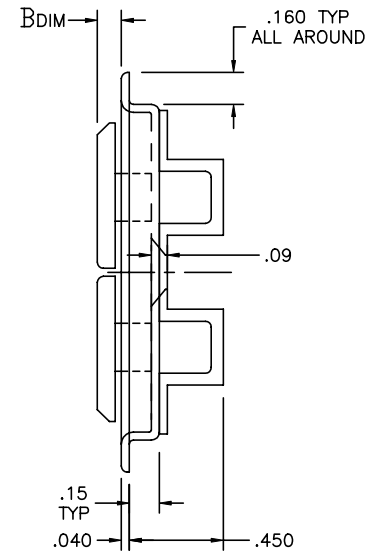
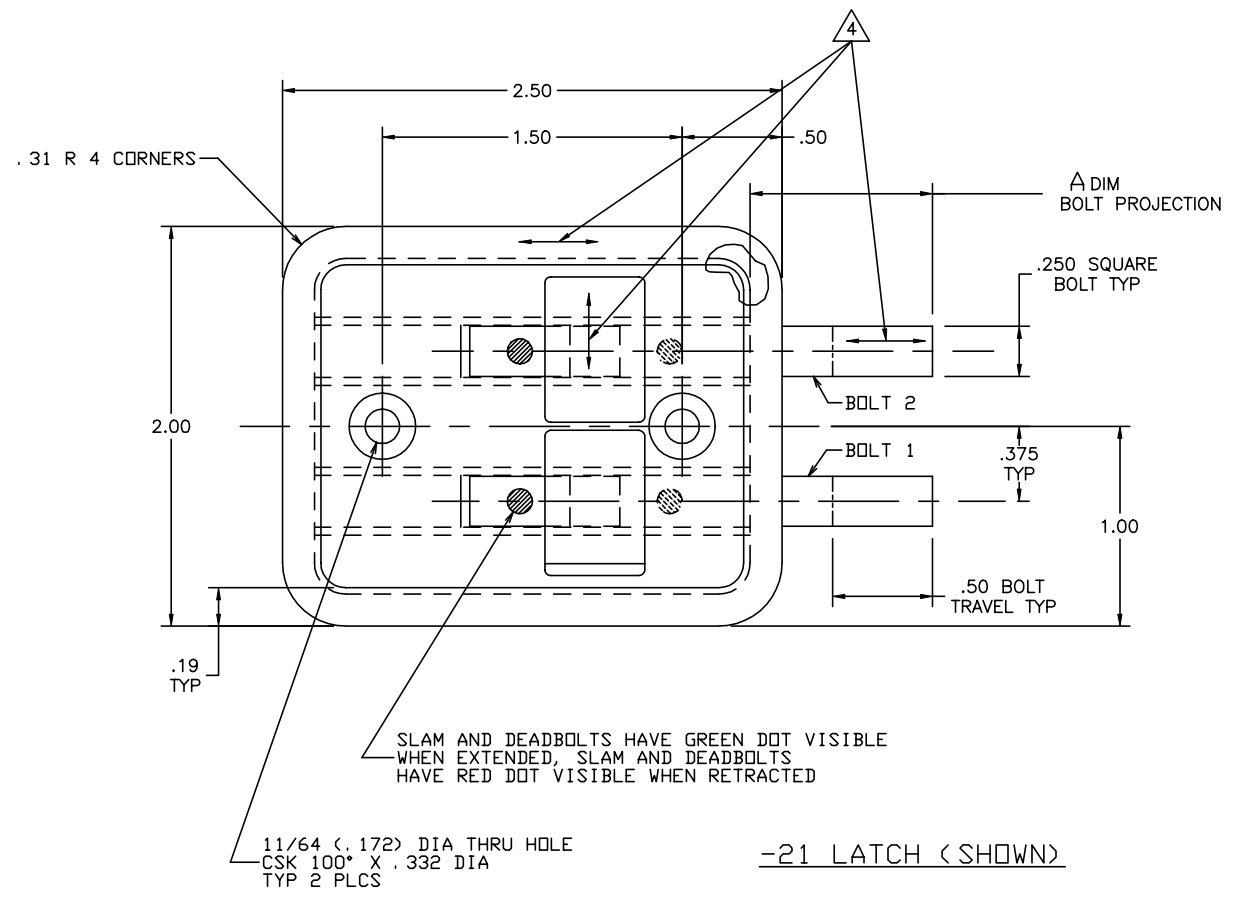
1

THE INFORMATION AND DESIGN HEREIN WAS ORIGINATED BY AND IS THE PROPERTY OF SKYLOCK INDUSTRIES INCORPORATED. SKYLOCK INDUSTRIES INCORPORATED RESERVES ALL PATENT, PROPRIETARY, DESIGN MANUFACTURING, REPRODUCTION, USE AND SALES RIGHTS THERE TO, AND TO ANY ARTICLE DISCLOSED THEREIN EXCEPT TO THE EXTENT RIGHTS ARE EXPRESSLY GRANTED TO OTHERS. THE FOREGOING DOES NOT APPLY TO VENDOR PROPRIETARY PARTS.

REVISIONS				
ZONE	LTR	DESCRIPTION	DATE	APPROVED
		SEE SHT. 1 FOR NOTES		

D  
C  
B  
A


D  
B  
A



-21 LATCH (SHOWN)

.12	.91	-21	LATCH	BOLT 1 TYPE $\triangle 6$	BOLT 2 TYPE $\triangle 7$	120754-221
B DIM	A DIM	PART NO.	DESCRIPTION	MATERIAL	SIZE SPECIFICATION	MAKE FROM

PARTS LIST

 SKYLOCK INDUSTRIES INCORPORATED  
MONROVIA CALIFORNIA U. S. A.

LATCH-DOUBLE BOLT

SIZE	CODE IDENT. NO.	DRAWING NO.	REV.
C	51941	20754	Q

SCALE 2: 1    WT.    SHEET 3 OF 3

4

3

2

1