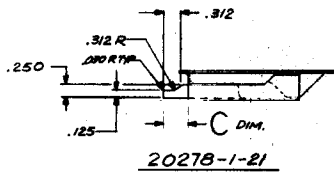
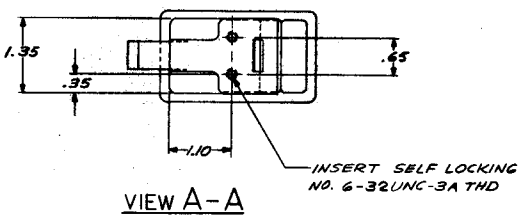
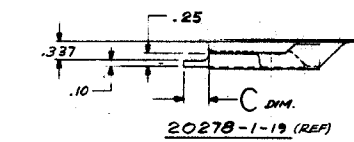
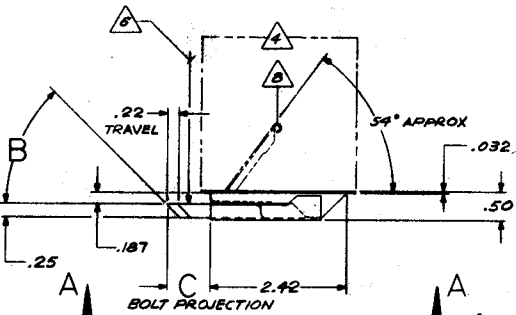
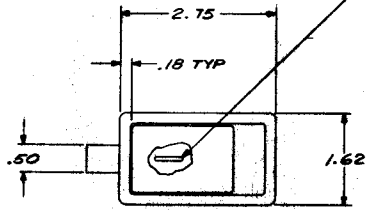


Rev.

THE INFORMATION AND DESIGN HEREIN WAS ORIGINATED BY AND IS THE PROPERTY OF SKYLOCK INDUSTRIES, INC. SKYLOCK INDUSTRIES, INC. HEREBY RECEIVES ALL PATENT, PROPRIETARY, DESIGN MANUFACTURING, REPRODUCTION, USE AND SALES RIGHTS TO THE ENTIRE RIGHTS AND EXPRESSES GRANTED TO OTHERS. THE FOREGOING DOES NOT APPLY TO VENDOR PROPRIETARY PARTS.



TABULATION		
SECOND DASH NO.	C DIM.	BEVEL B
-1	.37	45°
-3	.59	45°
-5	.82	45°
-7	1.30	45°
-9	.78	60°
-11	1.30	NONE
-13	.82	NONE
-15	.59	NONE
-17	.37	NONE
-19	.637	NONE
-21	.437	NONE

TABULATION	
FIRST DASH NO.	FLAP SPRING
-1	NONE
-3	△
-5	△

REVISIONS				
BY	EFFECTIVE ON	DESCRIPTION	DATE	BY
A		REVISED AND REDRAWN WITH CHANGES SEE 'NC' FOR WMS' CONV.	9-1-82	THF
B		ADDED -19	10-26-82	THF
C		SEE DCN 1D674	3-23-83	THF

D 4-3-87 Add note 9

- △ LOAD CAPACITY : 250 LBS.
  - △ SPRING TO HOLD FLAP OPEN WHEN BOLT IS NOT PROPERLY ENGAGED
  - △ SPRING TO RETURN FLAP TO CLOSE POSITION REGARDLESS OF BOLT POSITION
  - △ STATIC LOAD : 700 LBS
  - △ DECORATIVE FINISH : SATIN BRUSH IN AREA SHOWN.
3. FINISH : PASSIVATE  
 2. MATL: BOLT ; BRASS HARD DRAWN  
 ALL OTHER PARTS 300 SERIES CRES.
1. REMOVE ALL BURRS AND SHARP CORNERS
- NOTES: UNLESS OTHERWISE SPECIFIED

EXAMPLE OF PART NO.  
 20278 - 1 - 15

— BOLT PROJECTION .59  
 — NO BEVEL ON BOLT  
 — NO FLAP SPRING  
 — BASIC PART NO.

PART NUMBER	DESCRIPTION	MATERIAL OR NOTE
RECD		
UNLESS OTHERWISE NOTED DIMENS. FOR ARE IN INCHES. TOLERANCES ON DECIMALS .XX ± .03 .XXX ± .010 ANGLES SURFACE ROUGHNESS HEAT TREAT FINISH INSPECT REF. NO.		
CONTRACT NO.		
DRAFTSMAN M. FOSTER		
CHECKER		
ENGR. PROD. APPD.		
APPROVAL		
NEXT ASSY USED ON APPLICATION		
LIST OF MATERIAL		
SKYLOCK INDUSTRIES, INC. SO. EL MONTE, CALIFORNIA		
LATCH ASSEMBLY		
SIZE	CODE IDENT NO.	
D	51941	20278
SCALE	WT CALC	WT ACT
		SHEET 1 OF 1