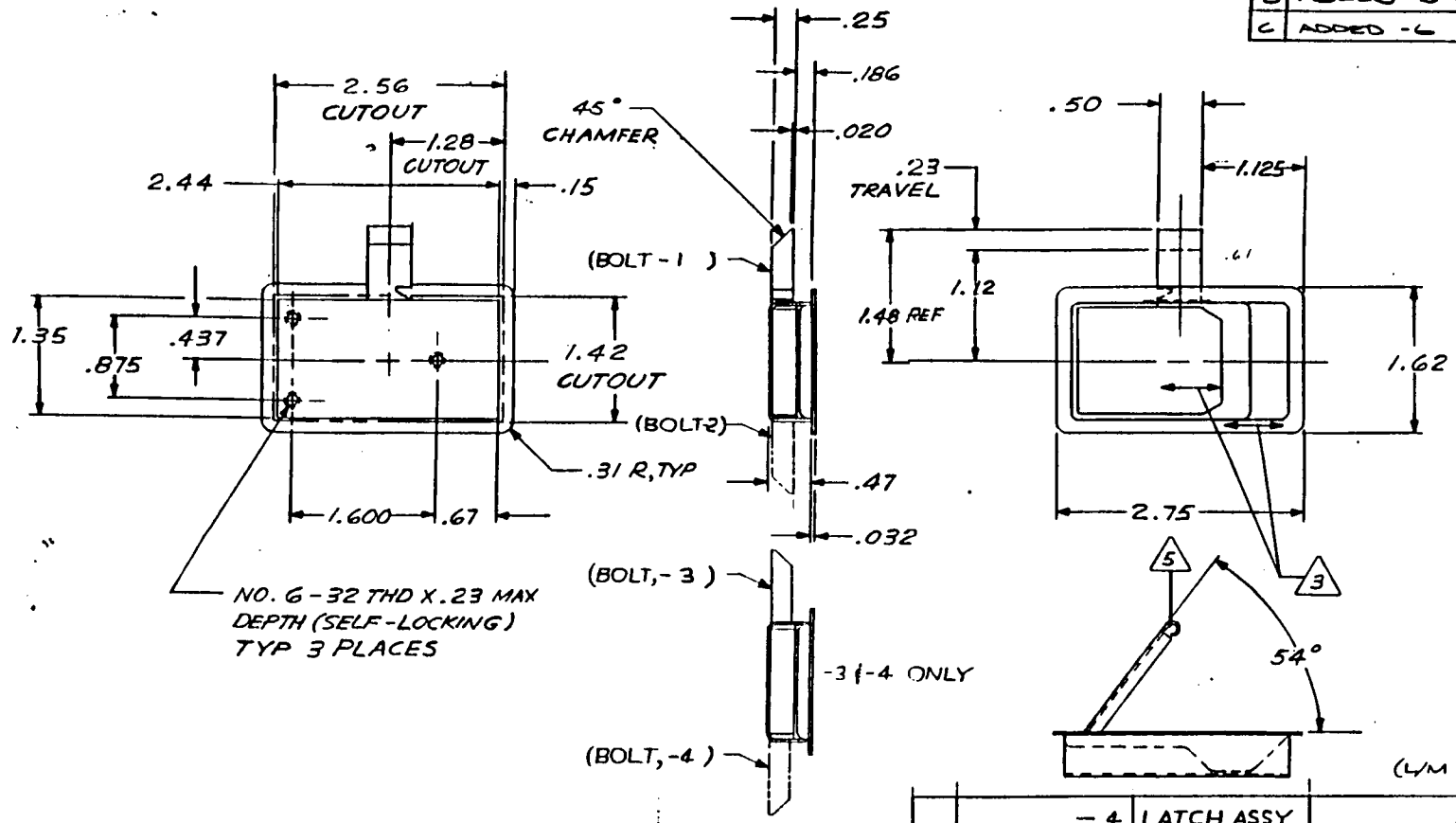


REVISIONS		DATE	BY
SYM	DESCRIPTION		
EFFECTIVE ON	DISP EXIST PARTS		APPROVAL
A	ADD -3 & -4	11-3-78	JEE
B	ADDED -5 + SHT. 2	6-18-82	T.C.
C	ADDED -6	8-30-92	K



6. SPRING TO HOLD FLAP DOWN REGARDLESS OF BOLT POSITION

- 5 LOAD CAPACITY: 250 LB MAX
- 4 STATIC LOAD: 600 LB MAX
- 3 DECORATIVE FINISH: SATIN BUFF
- 2 FINISH: CRES PARTS; PASSIVATE
- 1 MATL: BOLT; BRASS. SLIDE SHOES AND WEAR STRIP; PLASTIC. ALL OTHER PARTS 300 SERIES CRES

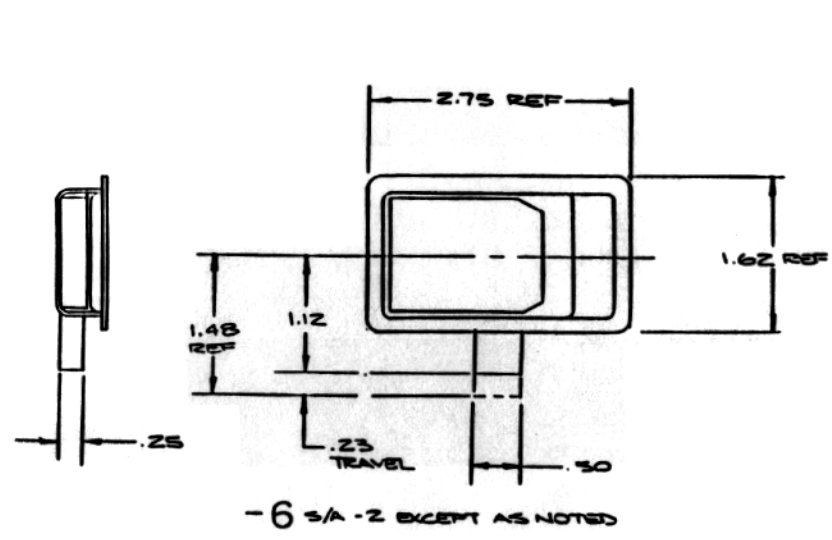
NOTES: UNLESS OTHERWISE SPECIFIED

PART NUMBER	DESCRIPTION	MATERIAL OR NOTE
- 4	LATCH ASSY	1 2 LH
- 3	LATCH ASSY	1 2 RH
- 2	LATCH ASSY (OPP)	1 2 LH
- 1	LATCH ASSY (SHOWN)	1 2 RH

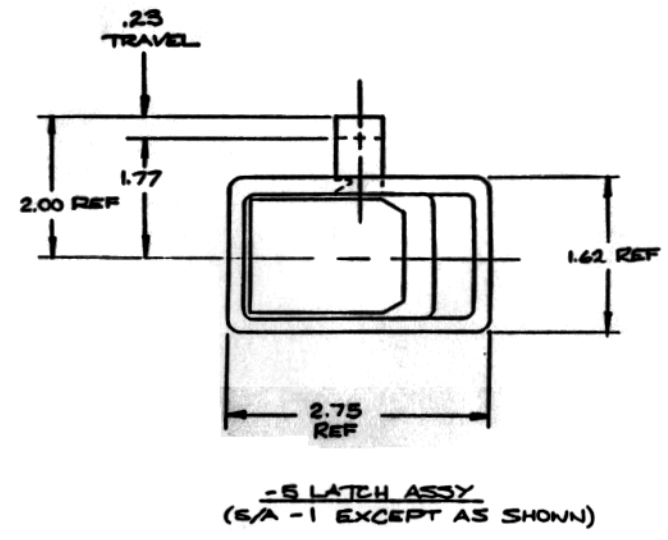
REQD		LIST OF MATERIAL	
UNLESS OTHERWISE NOTED DIMENSIONS ARE IN INCHES. TOLERANCES ON DECIMALS XX ± .03 XXX ± .010 ANGLES ± 0° 30' DRILLED HOLES PER ANSI B31.1		CONTRACT NO.	
SURFACE ROUGHNESS		DRAFTSMAN M. FOSTER 5-478	
HEAT TREAT		CHECKER	
FINISH		ENGINEER Maurice Foster 5-478	
INSPECT		PROD. APPD Dell 5-478	
REF. NO.		APPROVAL Maurice Foster 5-478	
NEXT ASSY		USED ON	
APPLICATION		BYKLOCK INDUSTRIES, INC. BALDWIN PARK, CALIFORNIA	
		LATCH ASSEMBLY	
		SIZE	CODE IDENT NO.
		C 51941	20113
		SCALE	WT CALC
		WT ACT	SHEET 1 OF 2

reproduction or forgery is prohibited. All rights reserved. No part of this drawing may be reproduced or transmitted in any form or by any means electronic or mechanical, including photocopying, recording, or by any information storage and retrieval system, without permission in writing from the manufacturer. All rights are expressly granted to others. The manufacturer is not responsible for errors or for any consequences arising from the use of the information contained herein.

date	description	approved
	SEE SHT. 1 FOR NOTES	



- 6 3/A - 2 EXCEPT AS NOTED



- 5 LATCH ASSY  
(6/A - 1 EXCEPT AS SHOWN)

1. REMOVE ALL BURRS AND SHARP CORNERS.  
NOTES: UNLESS OTHERWISE SPECIFIED.

used on	next assy	final assy
application		qty reqd
unless otherwise specified		
interpret drawing in accordance with MIL-D-1000		
remove all burrs break sharp edges .010 max		
all corner and fillet radii to be .020 max		

	- 6	LATCH ASSY	△ 2 LH	
	- 5	LATCH ASSY	△ 2 RH	
qty reqd	part no	description	material	specification
				item no
parts list				
unless otherwise specified		drawn by	 Bryltek Industries Incorporated Monrovia California	
dimensions are in inches		checked		
tolerances on		engineer		
decimals angles drilled holes		project		
± .1 ± .05 ± .010		approval		
do not scale this drawing		approval	<h1>LATCH ASSY</h1>	
material - finish				
size	cust idnt no	drawing no	rev	
C	51941	20113	C	
scale	1/1	of	1	sheet 2 of 2