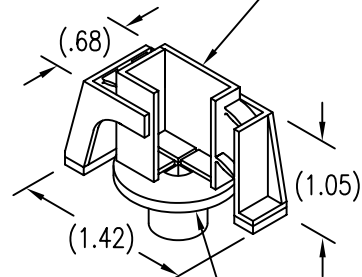


DISPOSABLE PRESSURE SENSITIVE  
ADHESIVE FIXTURE HOLDS BUSHING  
WHILE ADHESIVE CURES.



BUSHING ATTACHED  
BY ADHESIVE APPLIED  
TO THIS SURFACE.

LENGTH AND DIMENSION DATA

CODE	2	3	4	5	6	7	8	9	10	11	12	13	14	15	16
L	.125	.187	.250	.312	.375	.437	.500	.562	.625	.687	.750	.812	.875	.937	1.000
D MIN	NONE				.187			.312			.437				

MATERIAL AND FINISH DATA

CODE	BASEPLATE MATERIAL	FINISH	BUSHING MATERIAL	FINISH
AX	ALUMINUM	NONE	300 SERIES CRES	PASSIVATE
AA	ALUMINUM	ANODIZE	300 SERIES CRES	PASSIVATE

THREAD AND DIMENSION DATA

CODE	THREAD T	B DIA	C DIA
832	.164-32 UNC-2B	.188	.280
1032	.190-32 UNF-2B	.203	.280

NOTE: X001 SUFFIX TO PART NUMBER INDICATES NO INSTALLATION FIXTURE.

EXAMPLE PART NUMBER

CN505-1032-8 AX

BASEPLATE MATERIAL - ALUMINUM, NO FINISH  
 BUSHING LENGTH L - .500  
 THREAD SIZE T - .190-32 UNF-2B  
 BASIC PART NUMBER

UNLESS OTHERWISE SPECIFIED, ALL DIMENSIONS ARE  
IN INCHES AND TOLERANCES ARE AS SHOWN BELOW.  
DIMENSIONAL TOLERANCES AND SYMBOLS PER ANSI  
Y14.5M-1982.

PROPRIETARY PARTS SHOWN IN THIS DRAWING ARE THE SUBJECT  
OF ISSUED UNITED STATES AND FOREIGN PATENTS AND PATENTS  
PENDING.  
UNAUTHORIZED REPRODUCTION AND/OR DISTRIBUTION OF THIS  
DRAWING IS SPECIFICALLY PROHIBITED.

**GLICK BOND**

CARSON CITY  
NEVADA 89706

		APPROVALS	DATE	TITLE			
ANGLES	$\pm 1^\circ$	DRAWN DAC	25AUG99	BUSHING, SMALL BASE, ADHESIVE BONDED			
.XX	$\pm .03$	CHECKED DAC	25AUG99	SIZE	CAGE CODE	DWG. NO.	REV.
.XXX	$\pm .010$	RELEASED CGH	25AUG99	A	66530	CN505	0
.XXXX	$\pm .001$	REVISED		SCALE	1/1	25AUG99	SHEET 1 OF 1